

Alabama Traffic Safety Performance 2010

July Statewide Telephone Survey

July Survey Conducted 7/20/2010-8/2/2010

C:...ADPS/TACT/2011 TACT Eval Project/Surveys/NHTSA-GHSA Driver Survey

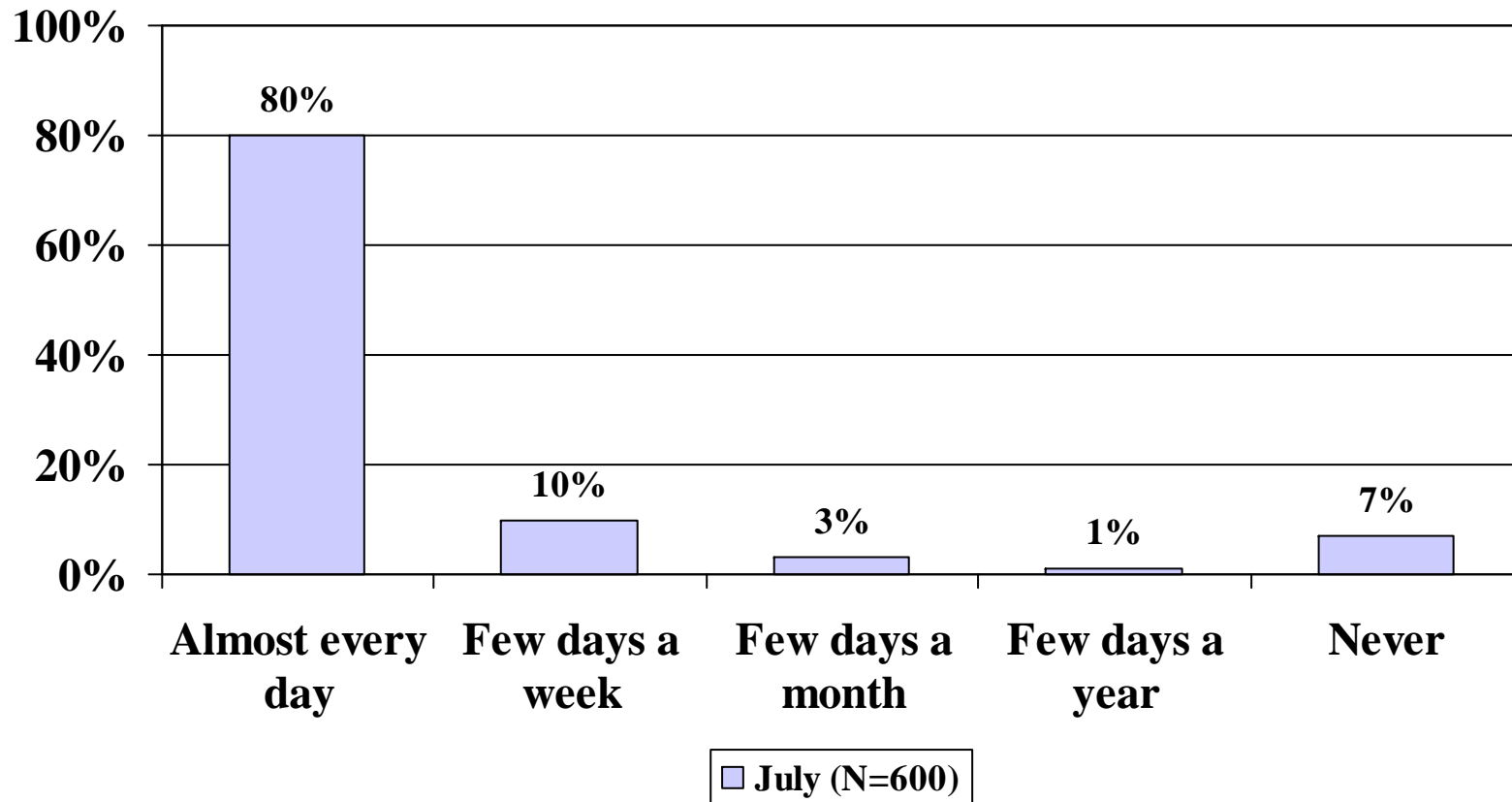
Conducted by
Abt SRBI Inc.

Data has been weighted to adjust for unequal probabilities of selection (number of telephone lines, adults in household, age and sex)

Methodology

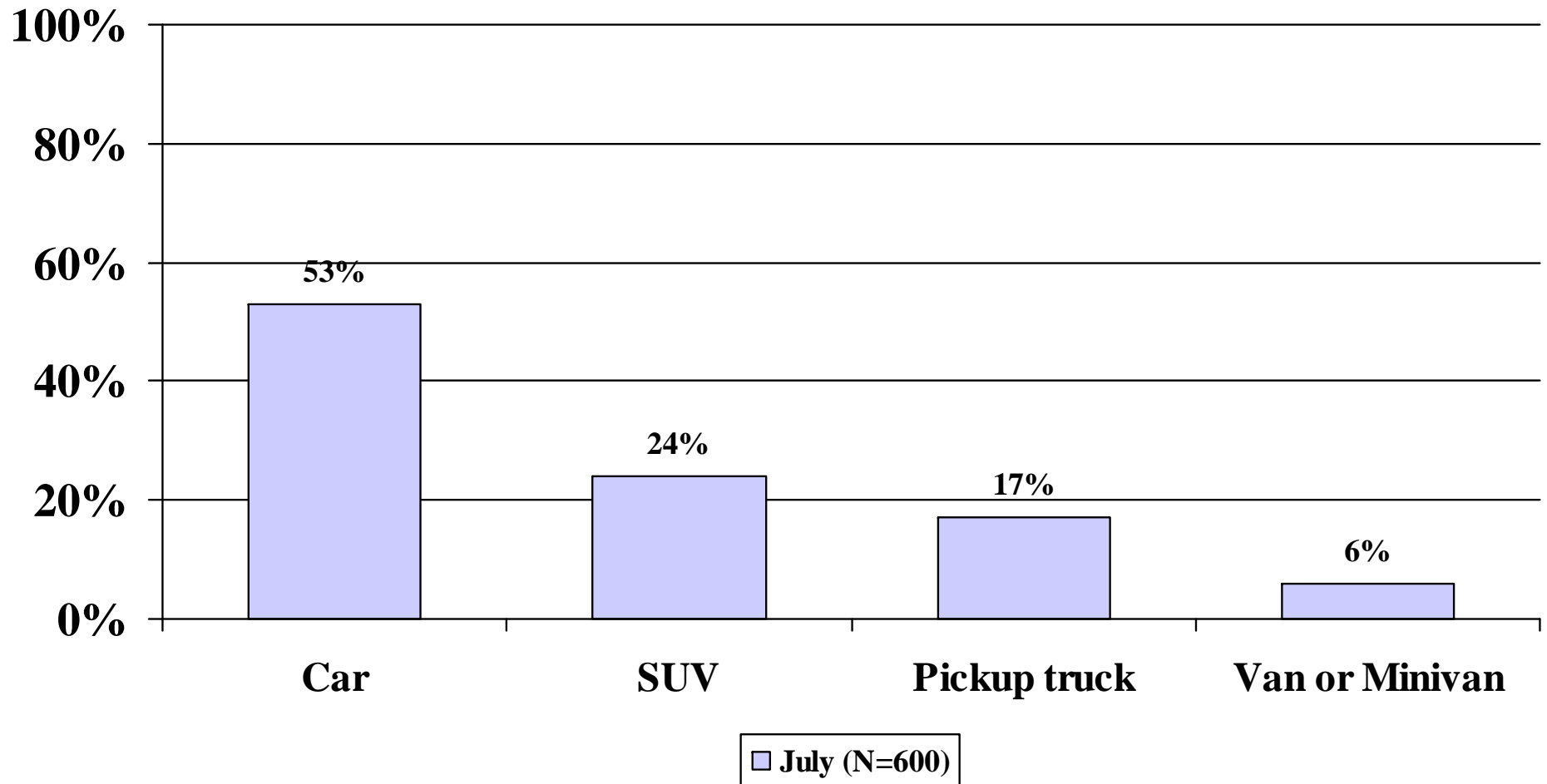
- Randomly selected telephone numbers were called in Alabama.
- Questionnaire programmed on computer assisted telephone interviewing (CATI) system.
- Up to 5 call-backs to determine if number was a household and up to 8 call-backs to find a respondent in a household.
- Attempt to convert initial refusals by more experienced interviewers.
- Respondents must be age 18 or older.

Frequency of Motor Vehicle Use



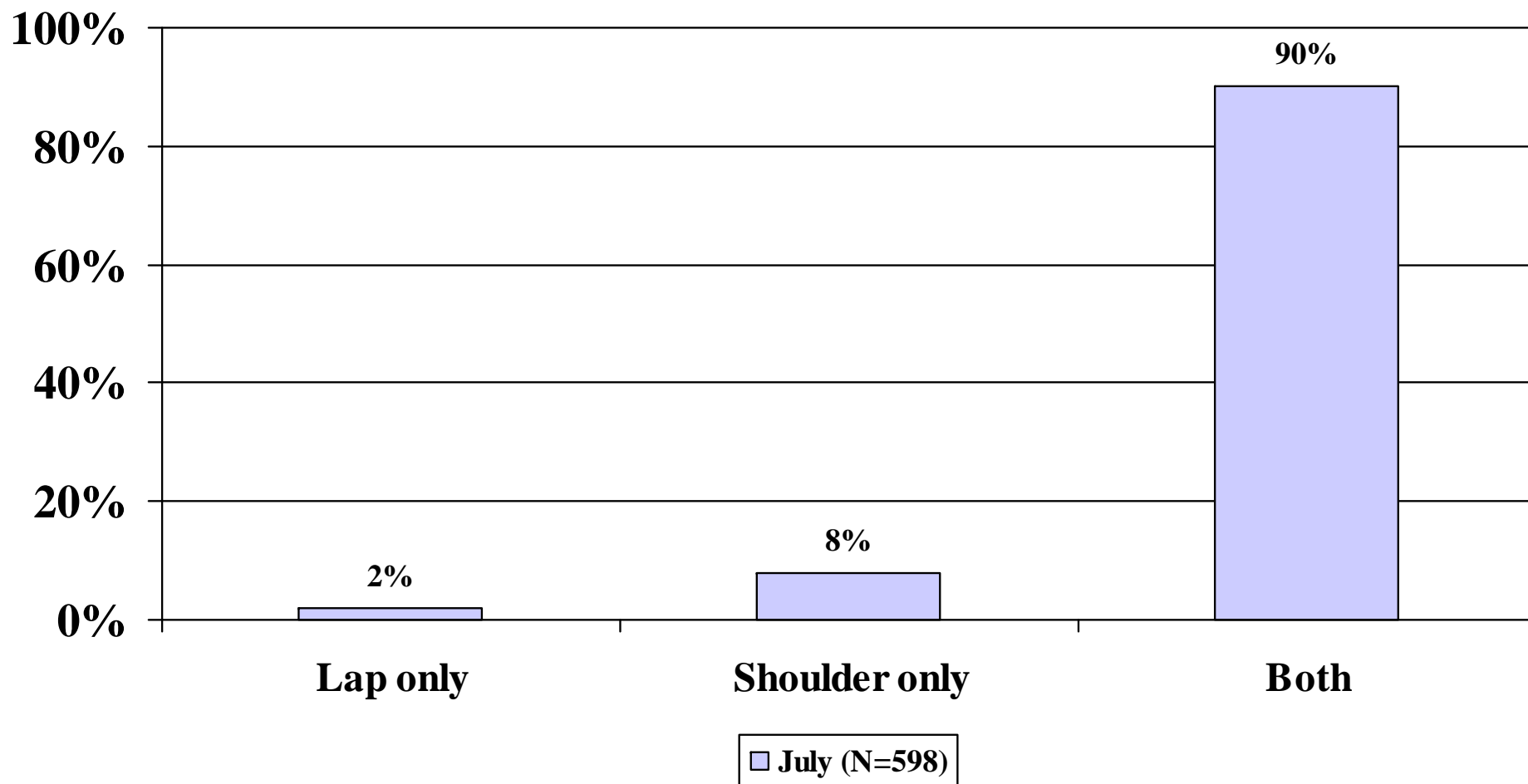
Q1. How often do you drive a motor vehicle? Almost every day, a few days a week, a few days a month, a few days a year or do you never drive?

Type of Motor Vehicle Driven



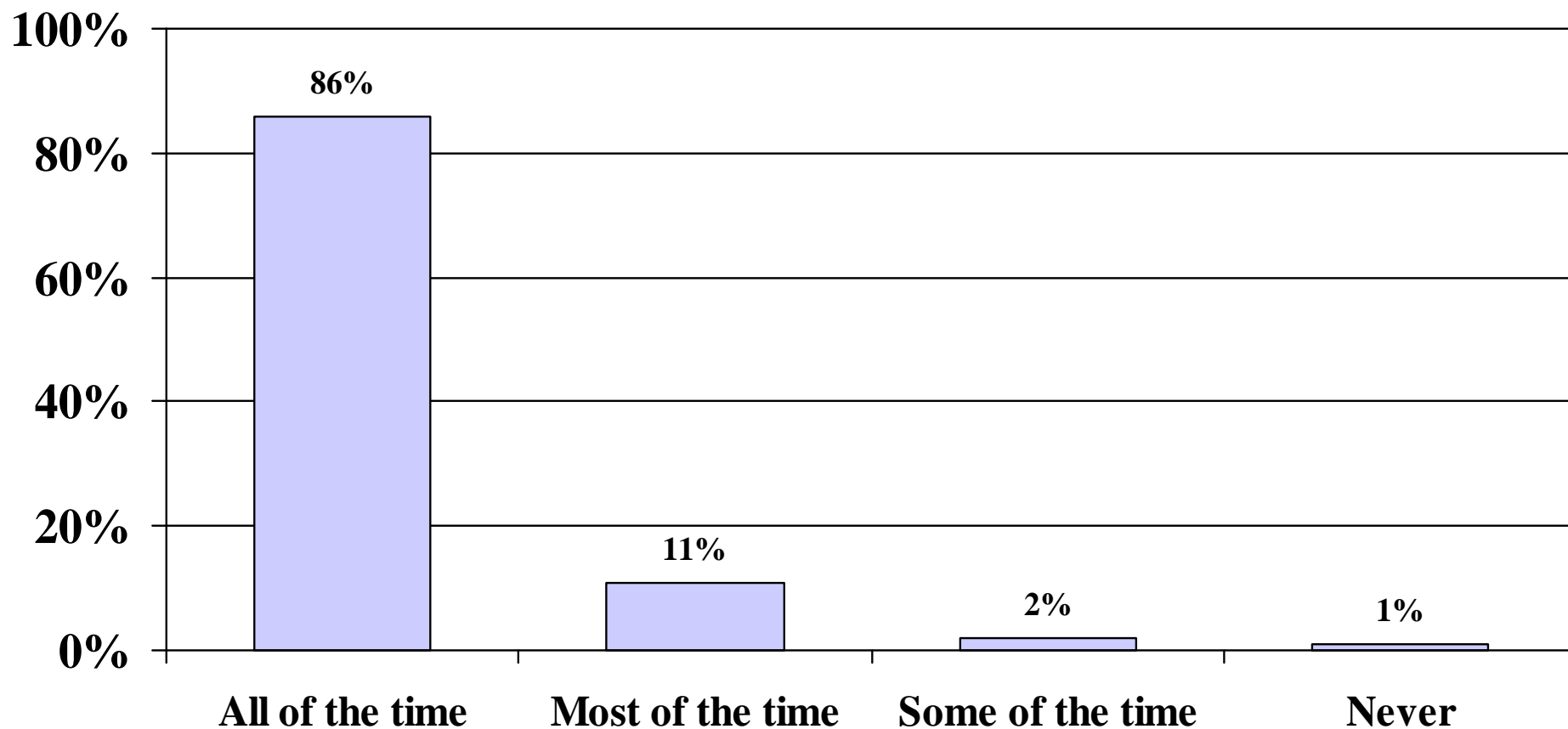
Q2. Is the vehicle you drive or ride in most often a car, van, motorcycle, sport utility vehicle, pickup truck, or other type of truck?

Type of Seat Belt in Primary Vehicle



Q3. Do the seat belts in the front seat of the vehicle (usually driven) go across your shoulder only, across you lap only, or across both your shoulder and lap? Base: Primary vehicle not a motorcycle

Frequency of Shoulder Belt Use

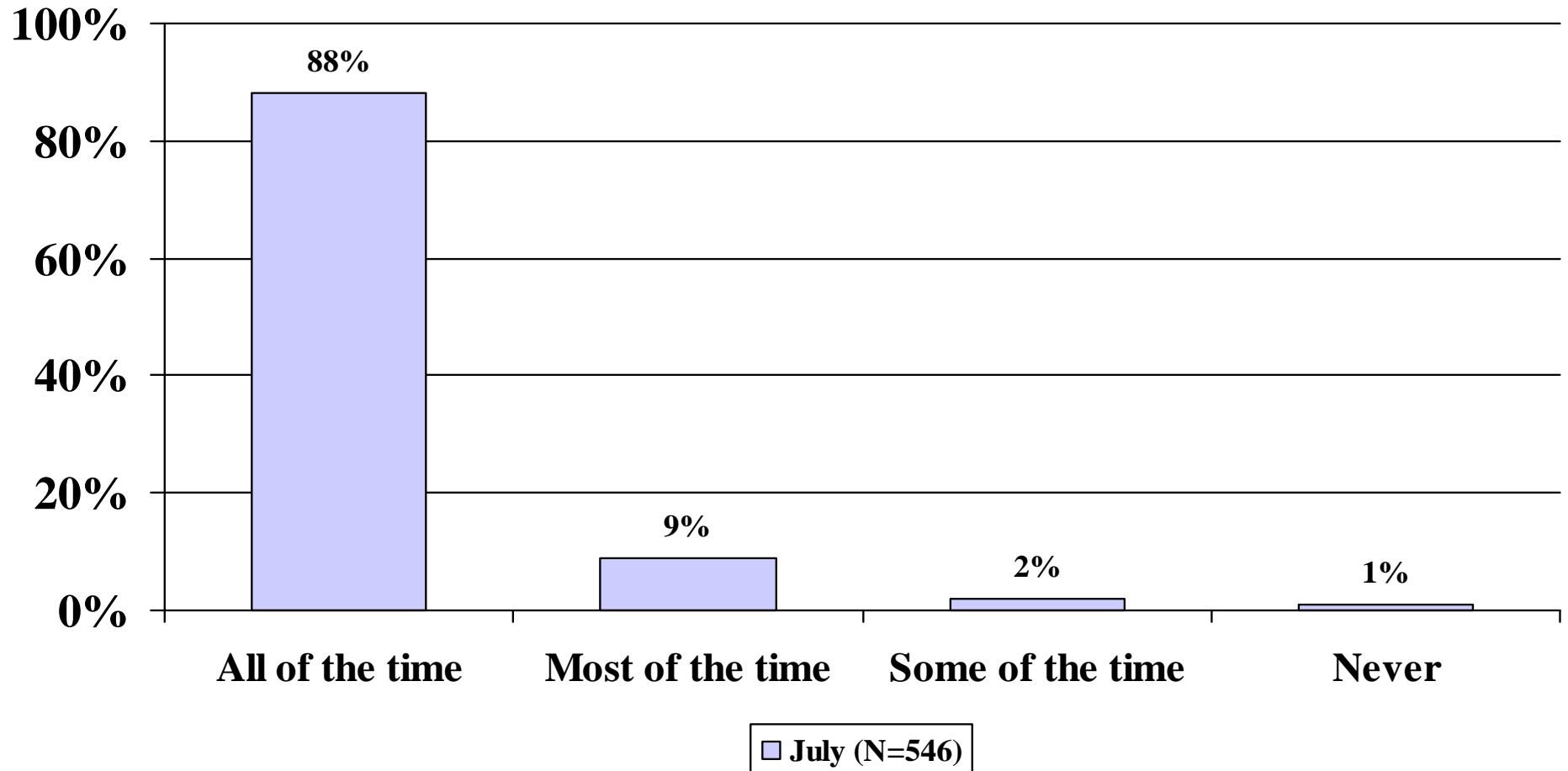


July (N=583)

Q4. When driving or riding in this vehicle, how often do you wear your shoulder belt?

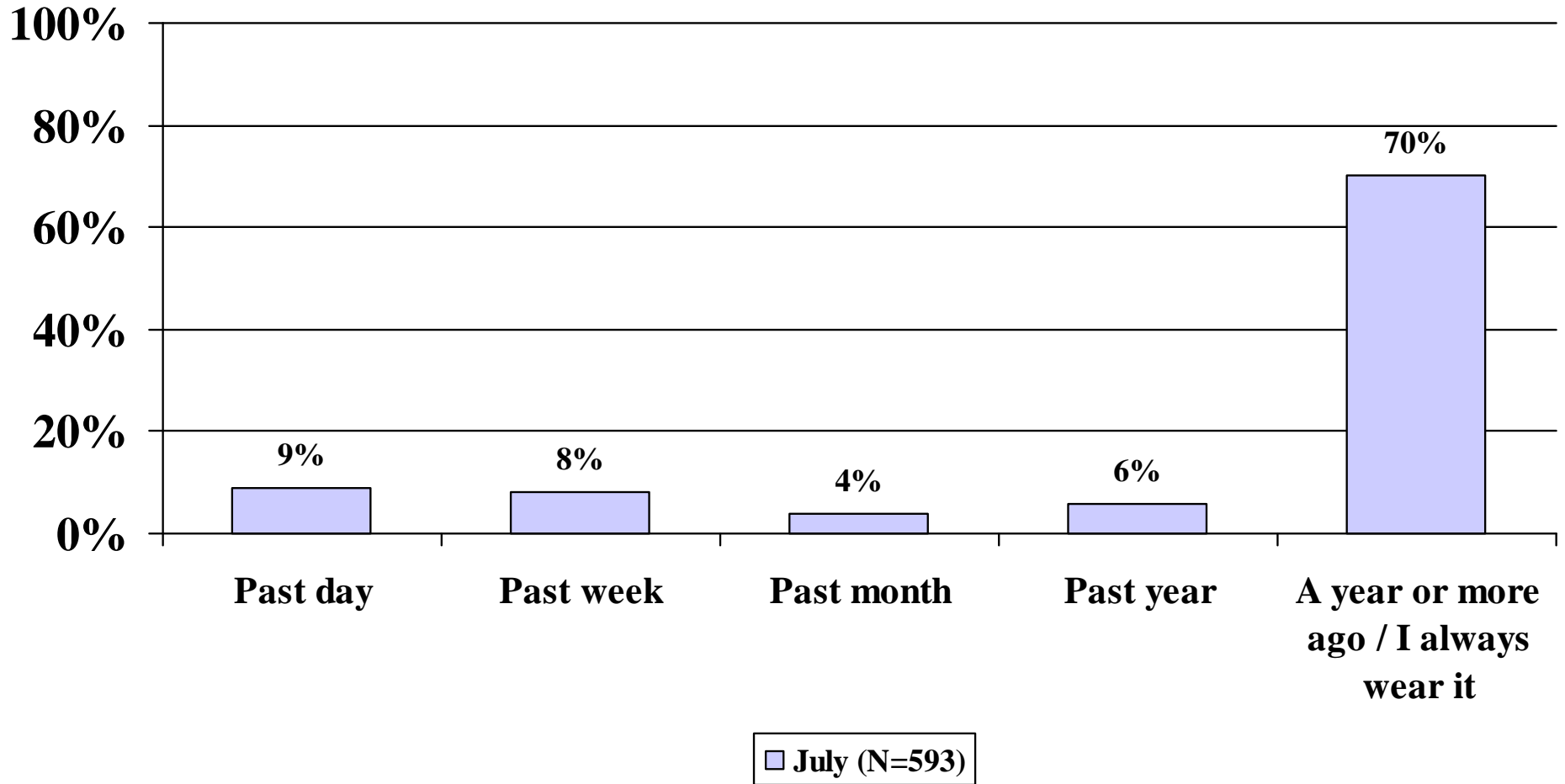
Base: Have shoulder belt in primary vehicle

Frequency of Lap Belt Use



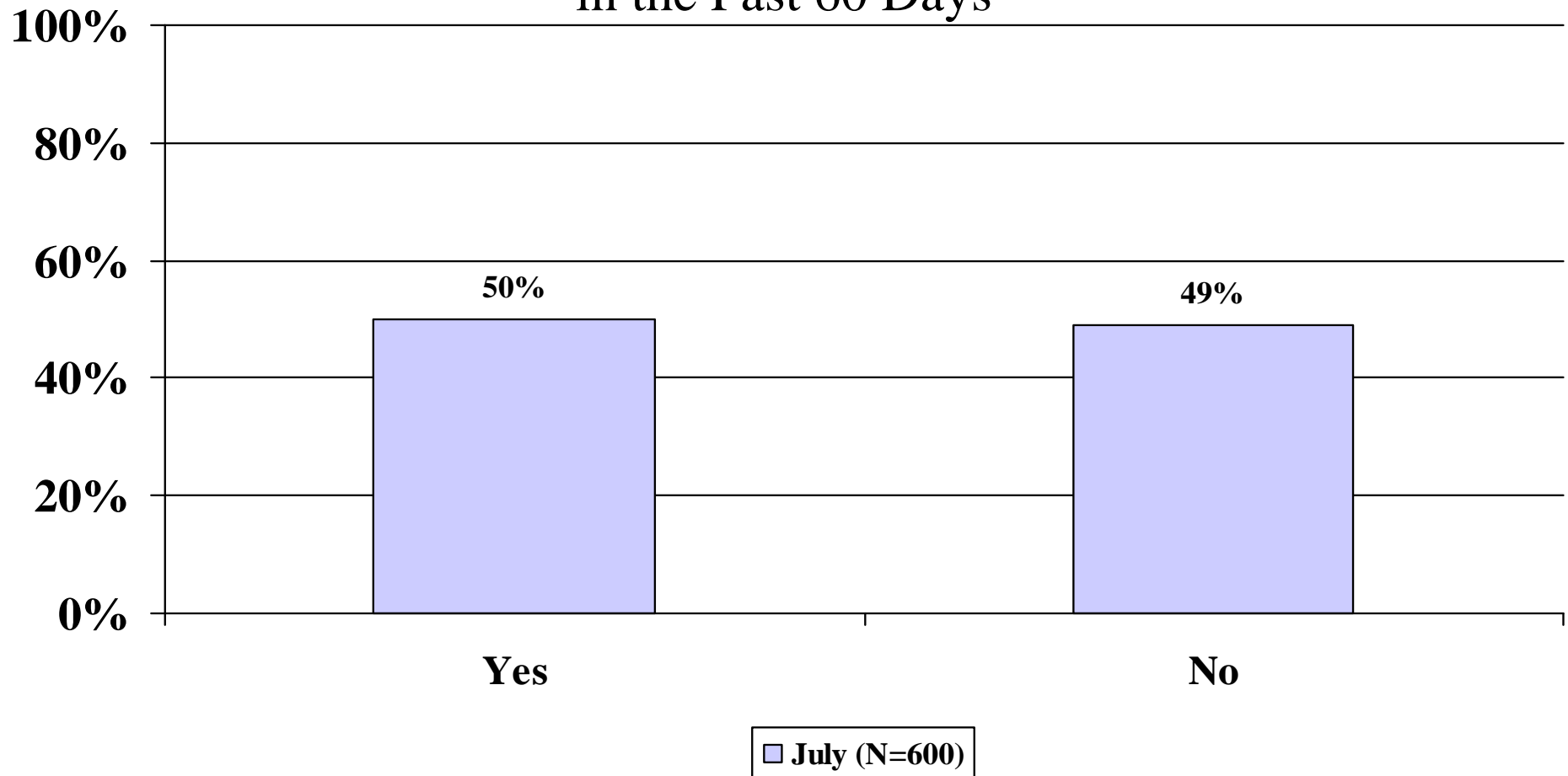
Q5. When driving or riding in this vehicle, how often do you wear your lap belt? Base: Have lap belt in primary vehicle

Most Recent Time Driving Without a Seat Belt



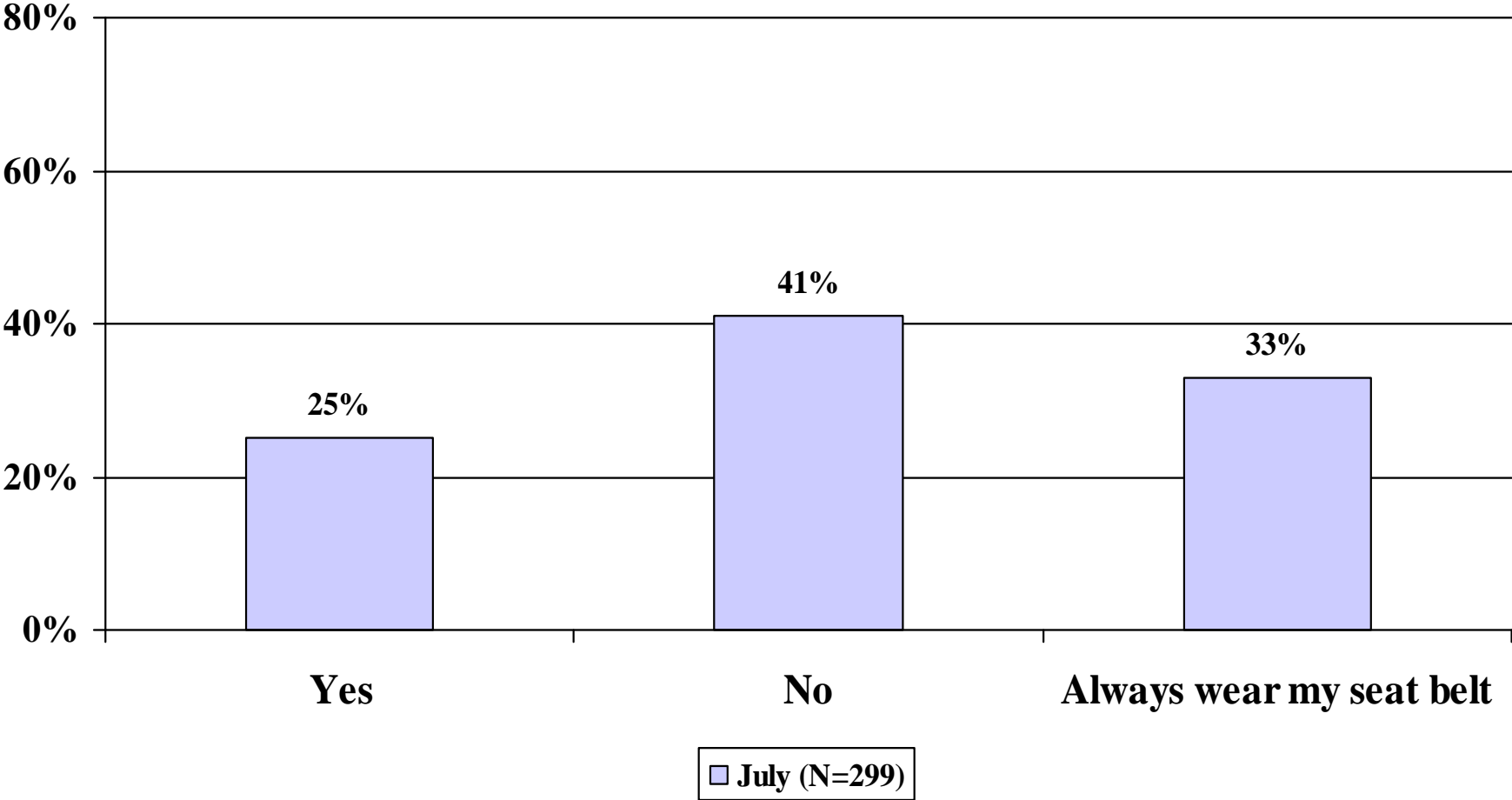
Q6. When was the last time you did NOT wear your seat belt when driving or riding in a motor vehicle? Base: Have shoulder or lap belt in primary vehicle

Messages about Seat Belt Law Enforcement in the Past 60 Days



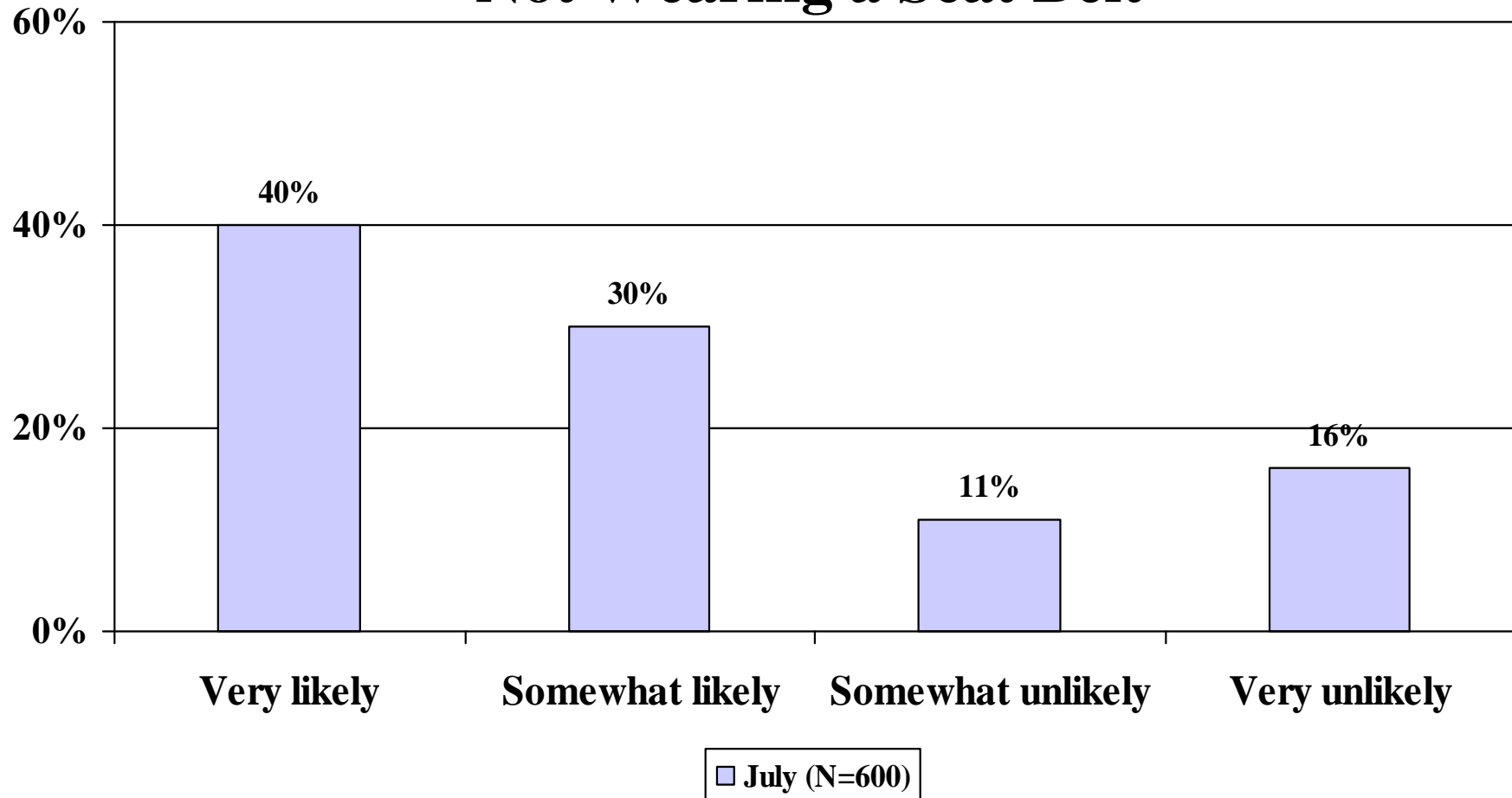
Q7. In the past 60 days, have you read, seen or heard anything about seat belt law enforcement by police?

Messages Cause More Frequent Seat Belt Use



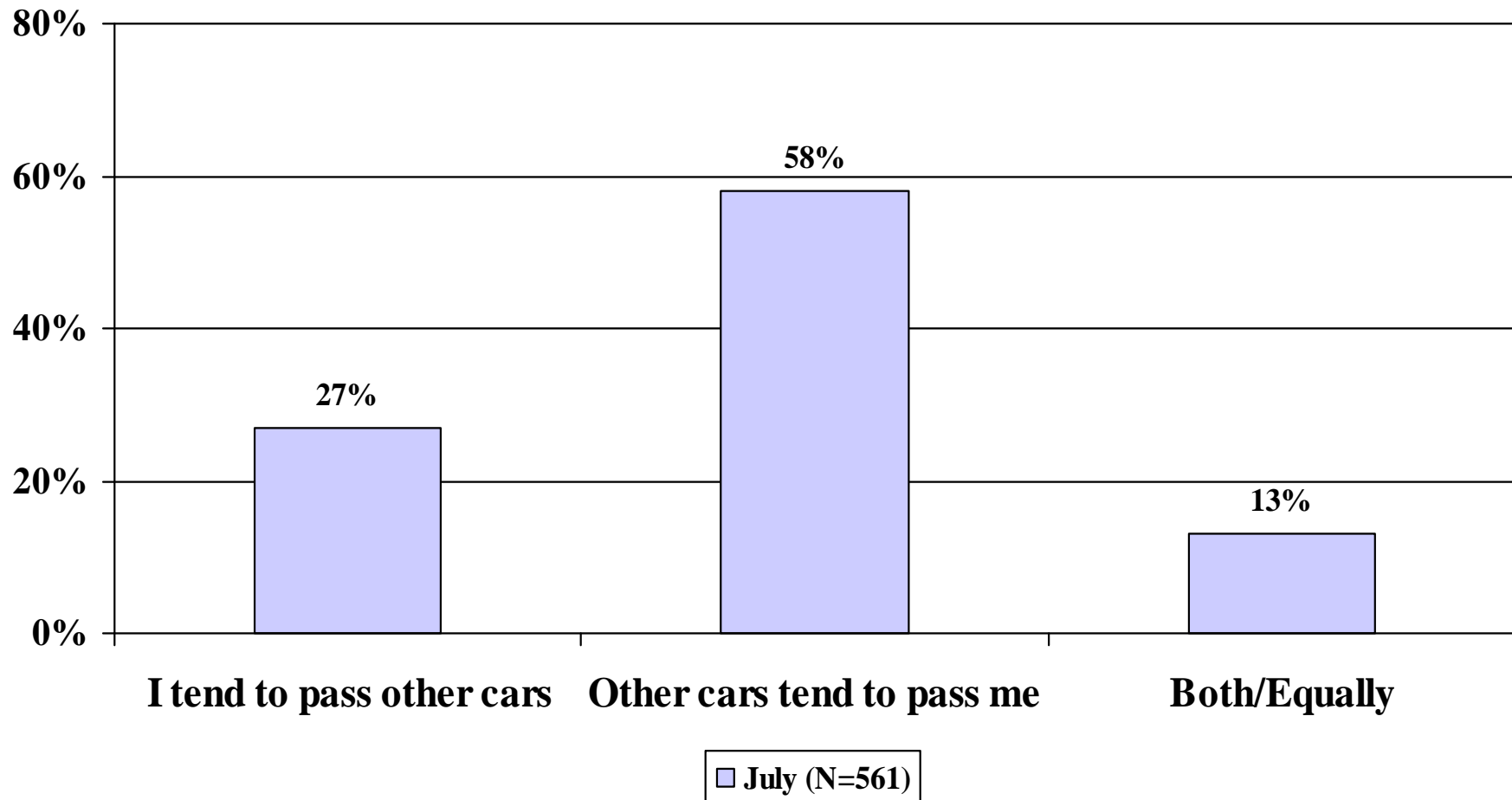
Q7B. Do these messages cause you to wear your seat belt more often that you usually do?

Likelihood of Being Ticketed for Not Wearing a Seat Belt



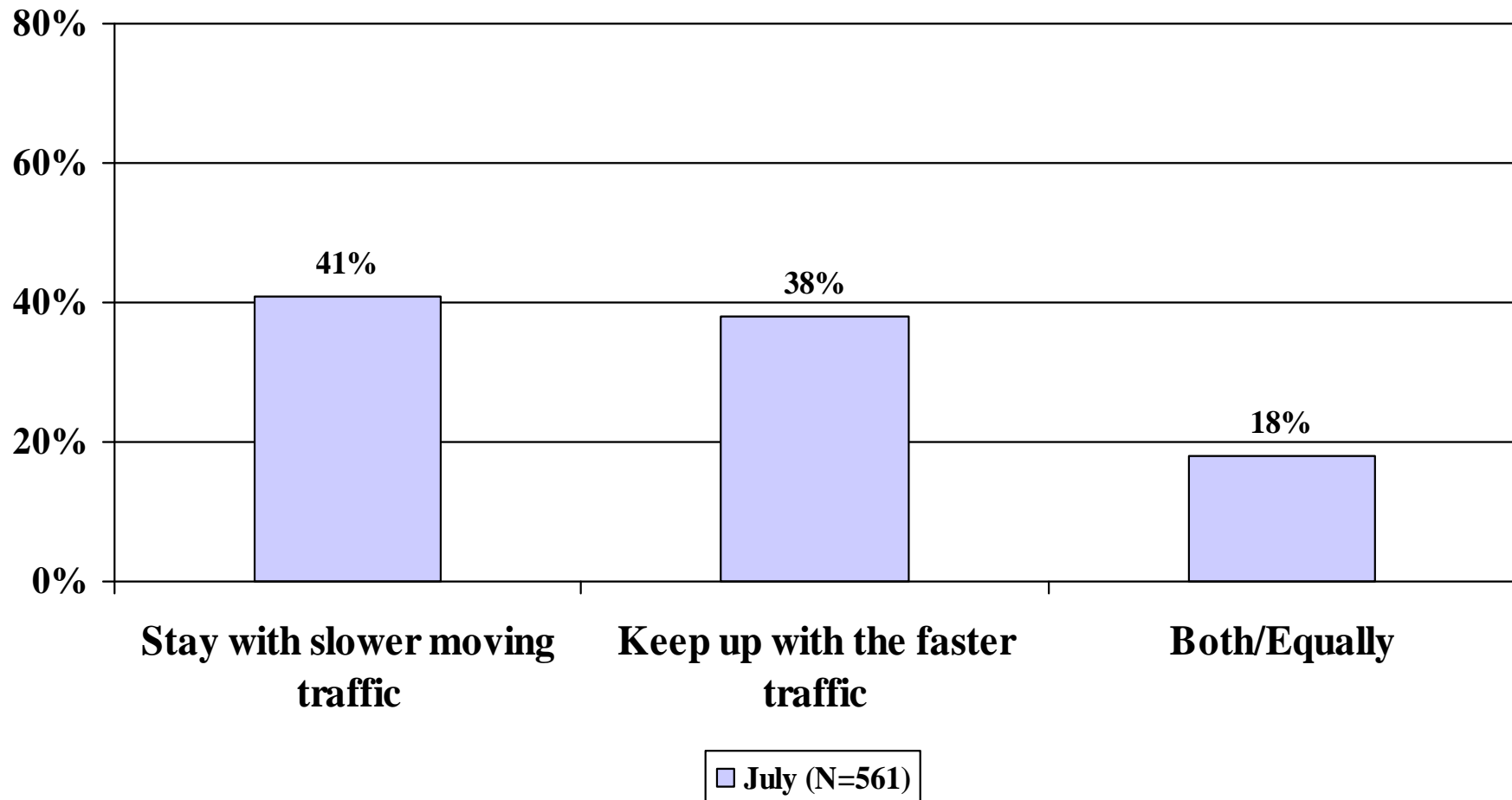
Q8. What do you think the chances are of getting a ticket if you don't wear your safety belt AT ALL while driving or riding over the next six months.

Statements Toward Driving Behavior



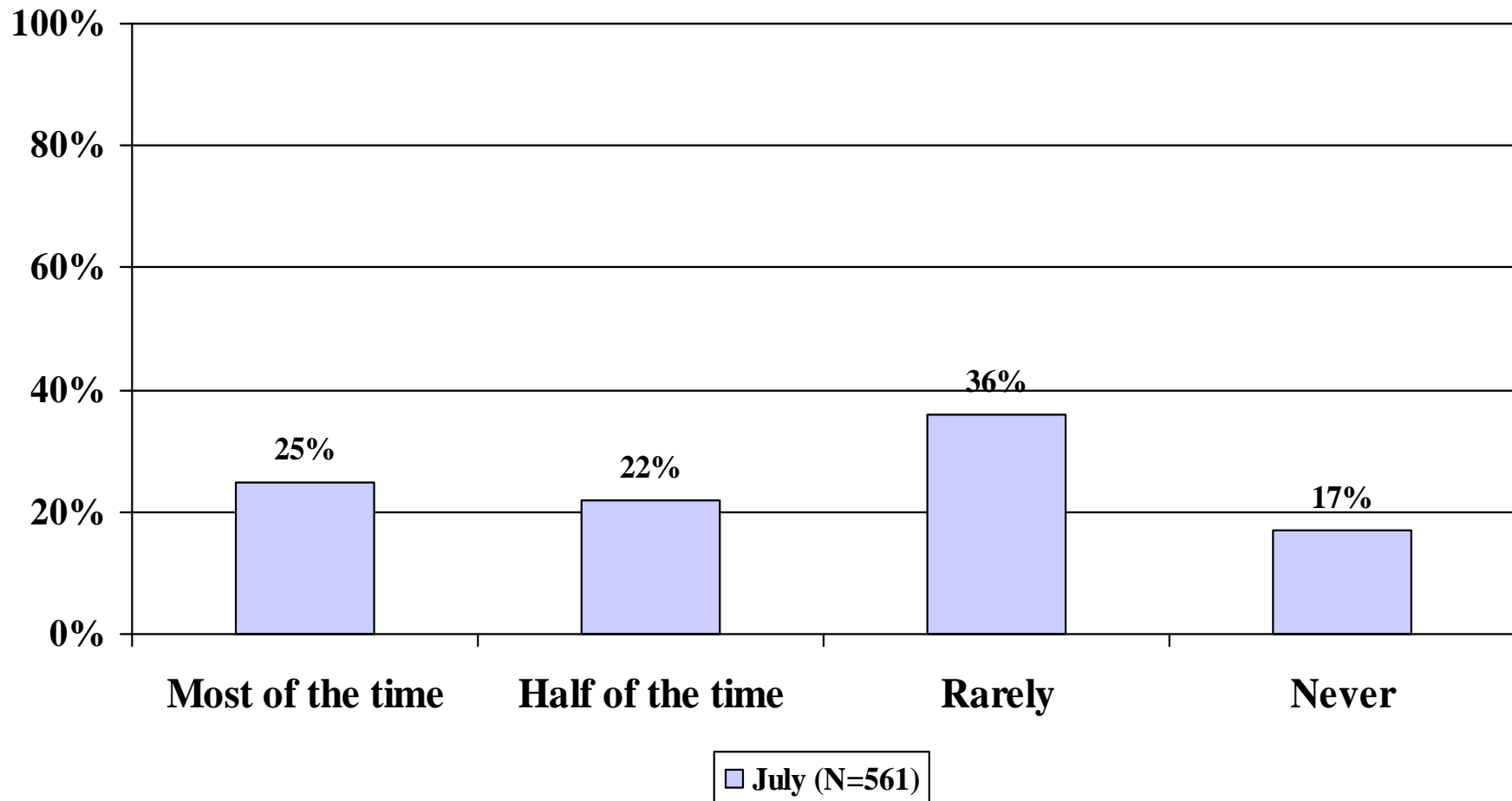
Q9. Which of the following statements best describes your driving?

Personal Driving Tendencies



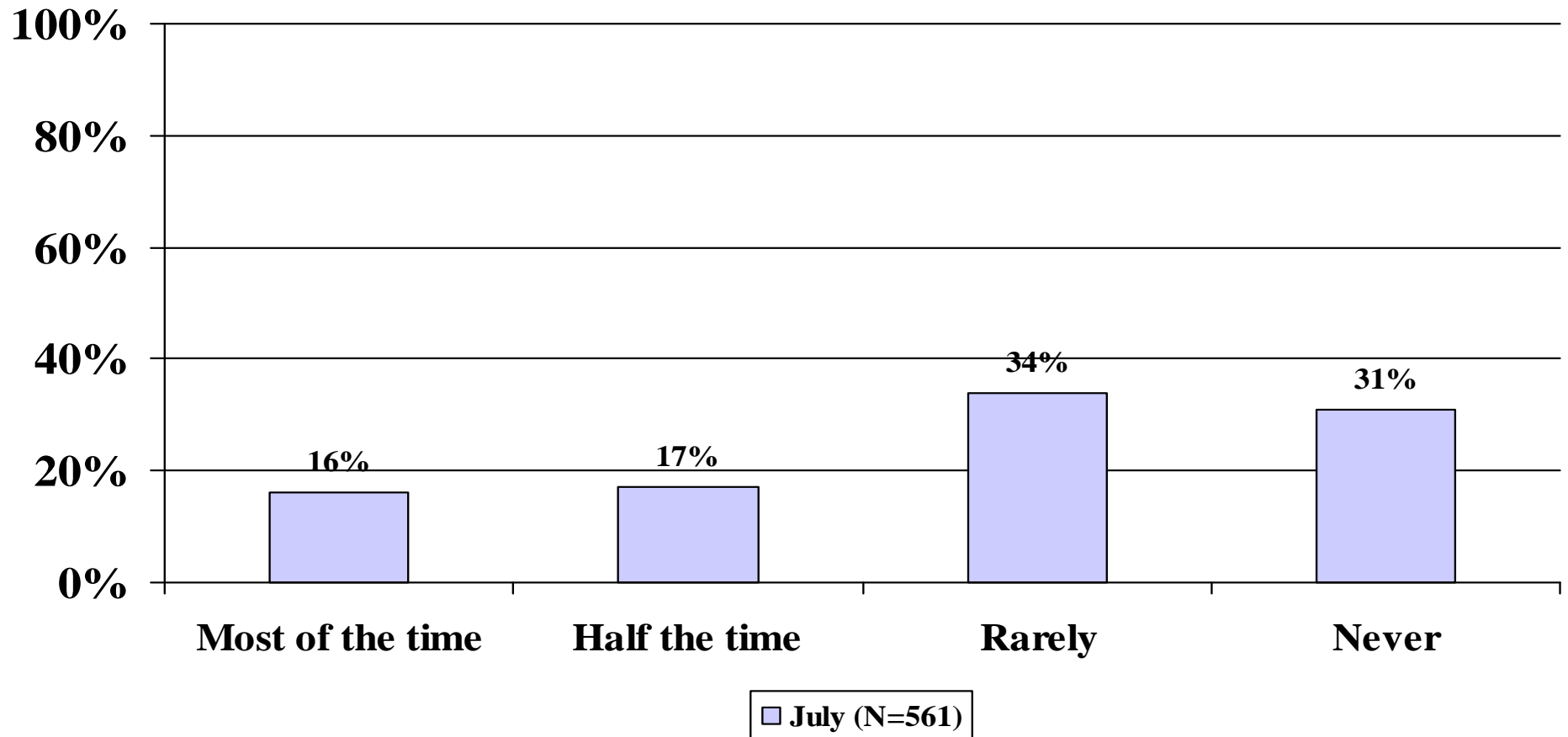
Q10. When driving I tend to ...

Driving Over the Speed Limit of 30mph



Q11. On a local road with a speed limit of 30 mph, how often do you drive faster than 35mph – most of the time, half of the time, rarely, never?

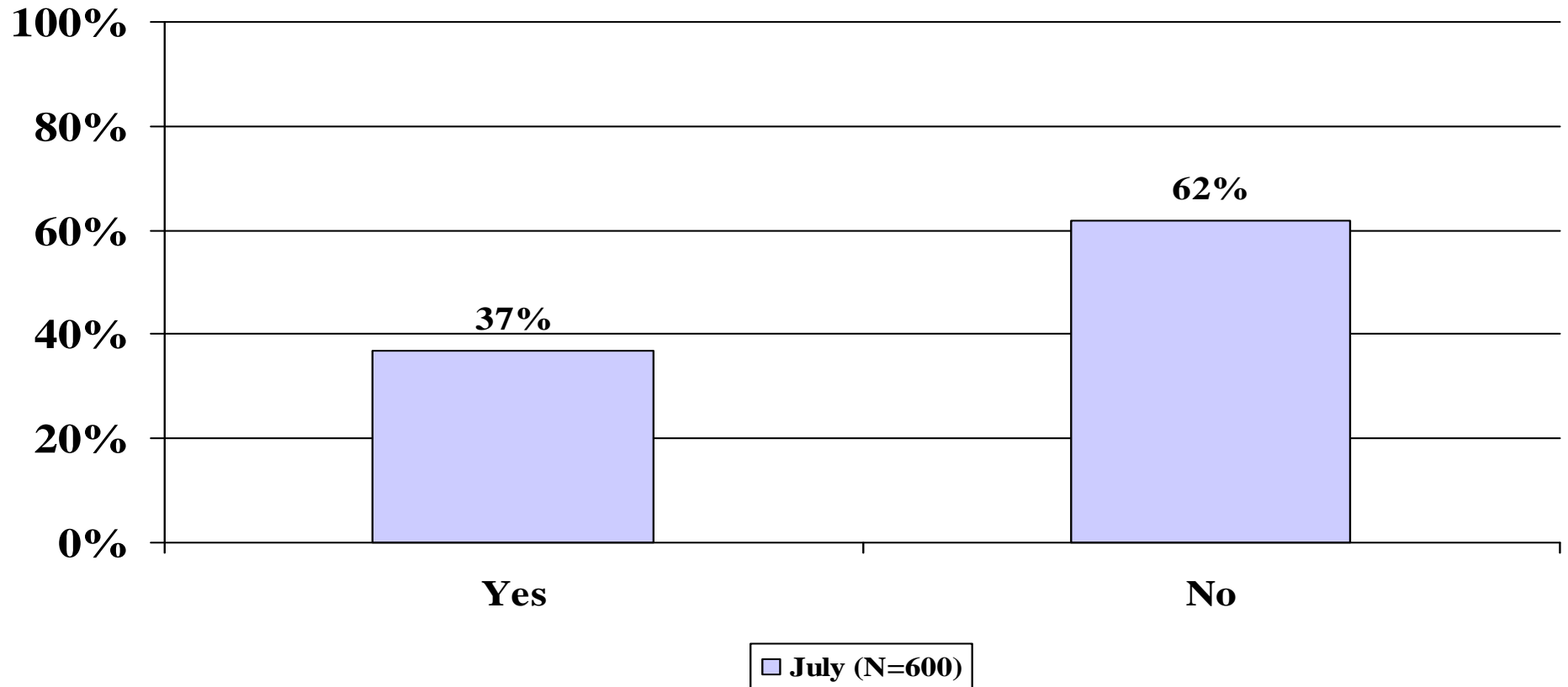
Driving Over the Speed Limit of 65mph



Q12. On a road with a speed limit of 65 mph, how often do you drive faster than 70 mph – most of the time, half the time, rarely, never?

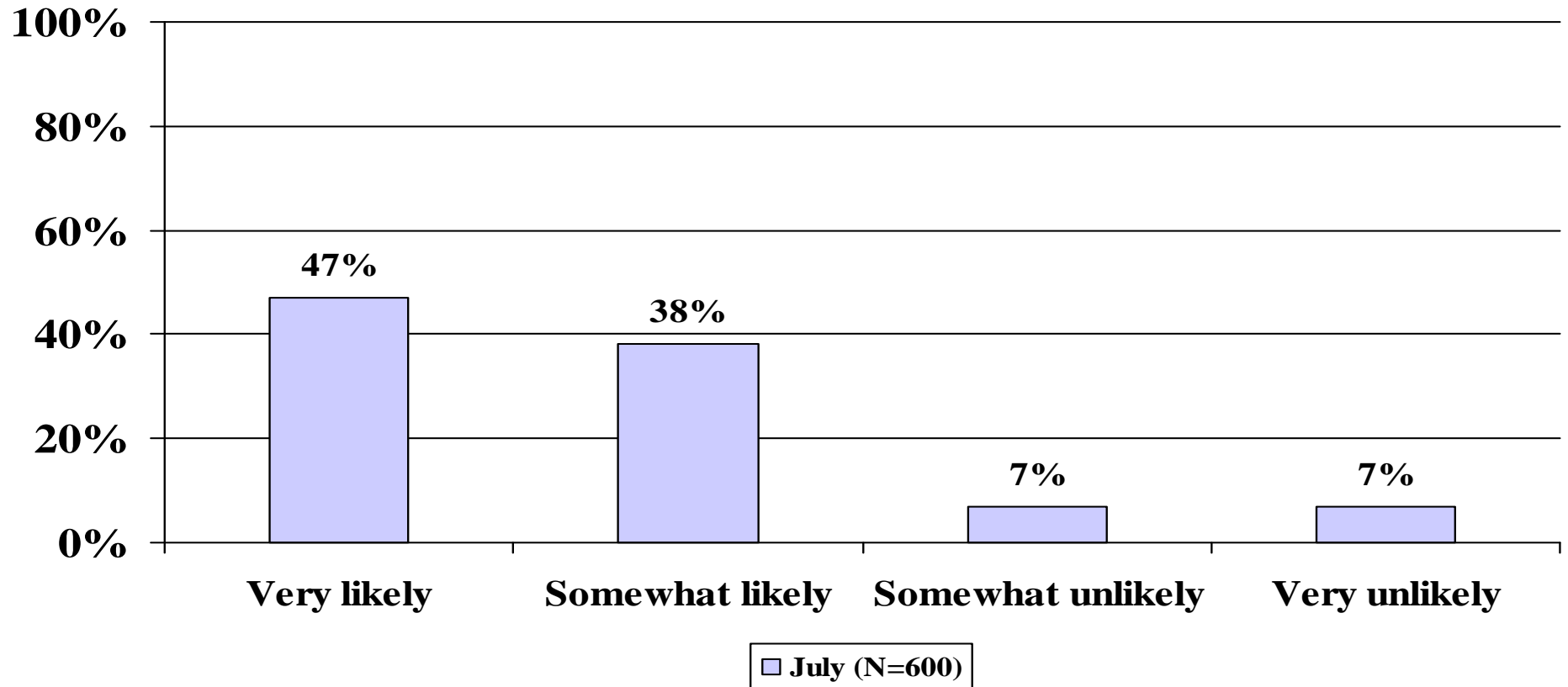
Speed Enforcement by Police

in the Past 30 days



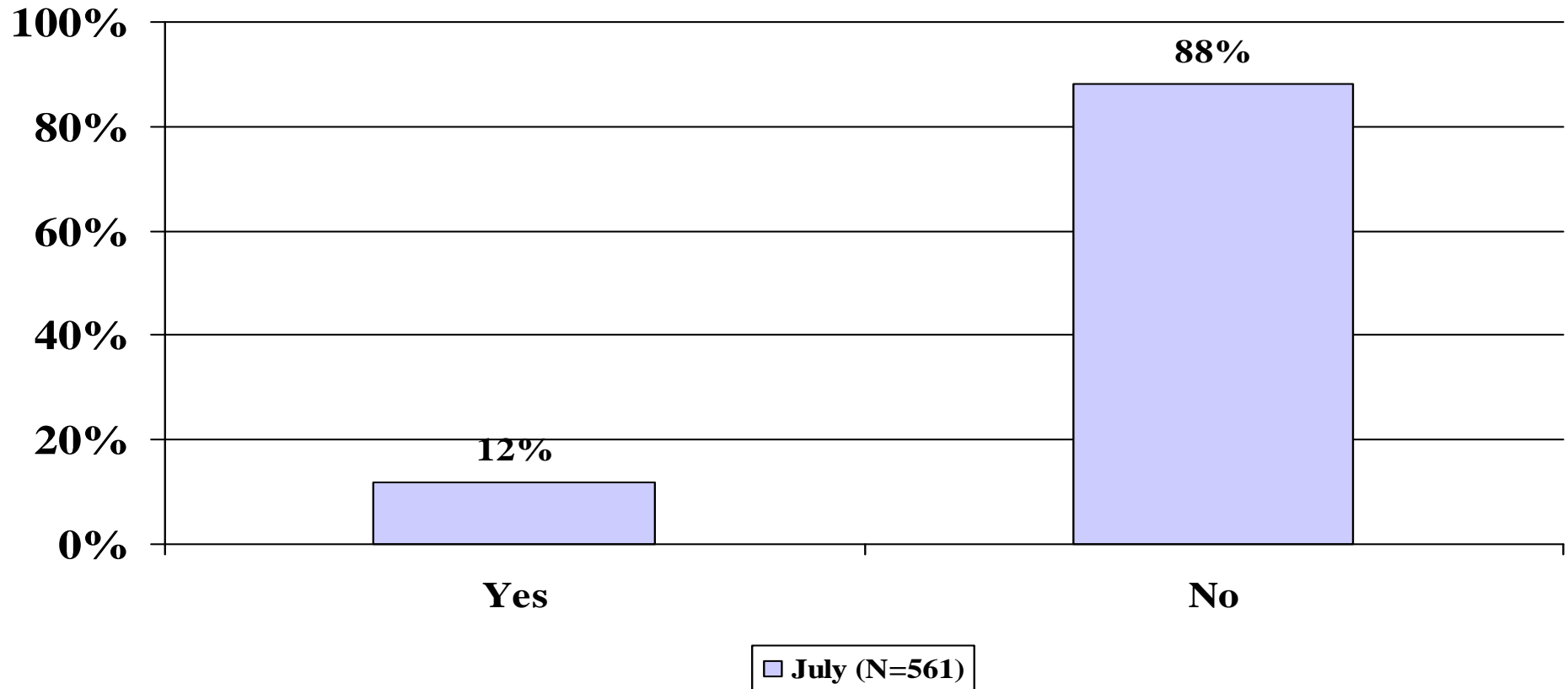
Q13. In the past 30 days, have you read, seen or heard anything about speed enforcement by police?

Chances of Getting a Speeding Ticket



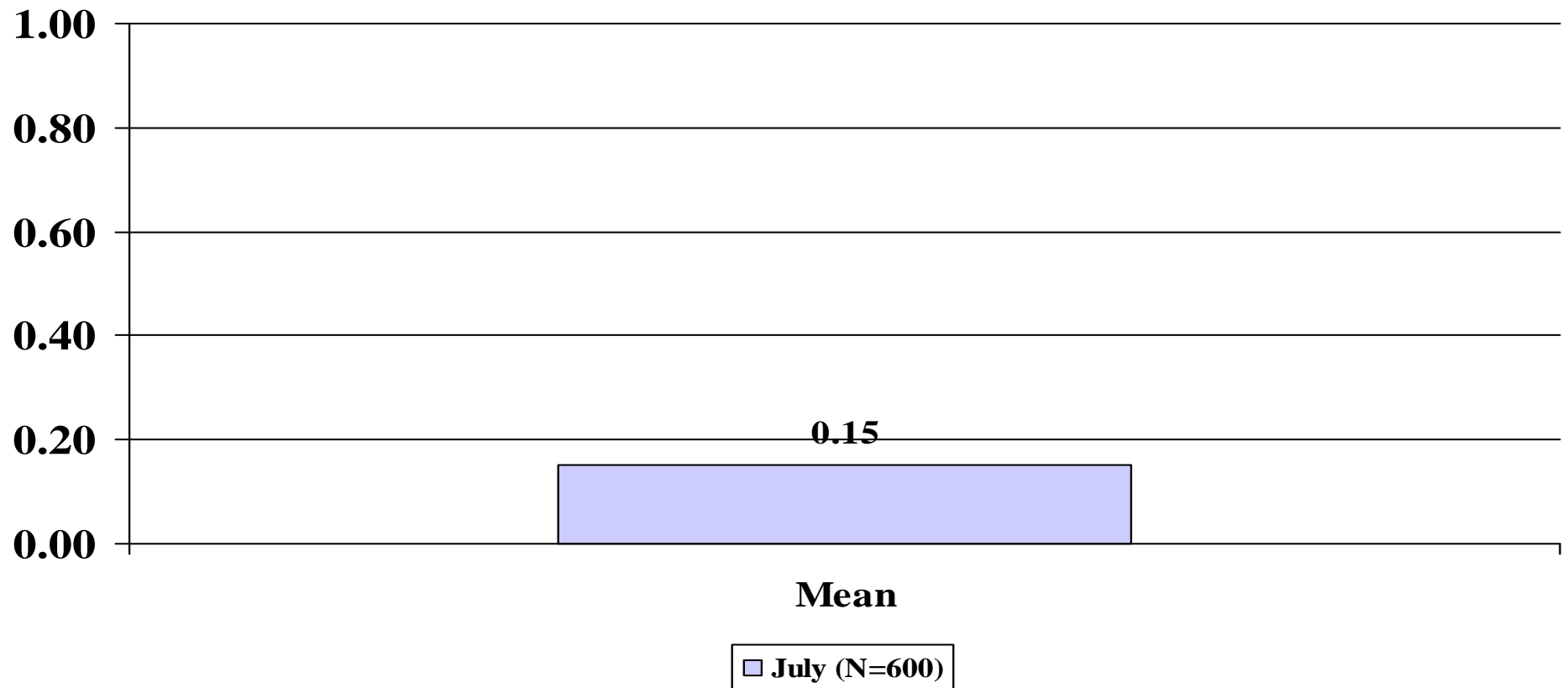
Q14. What do you think the chances are of getting a ticket if you drive over the speed limit?

Been Stopped by Police for Speeding in the Past 12 months



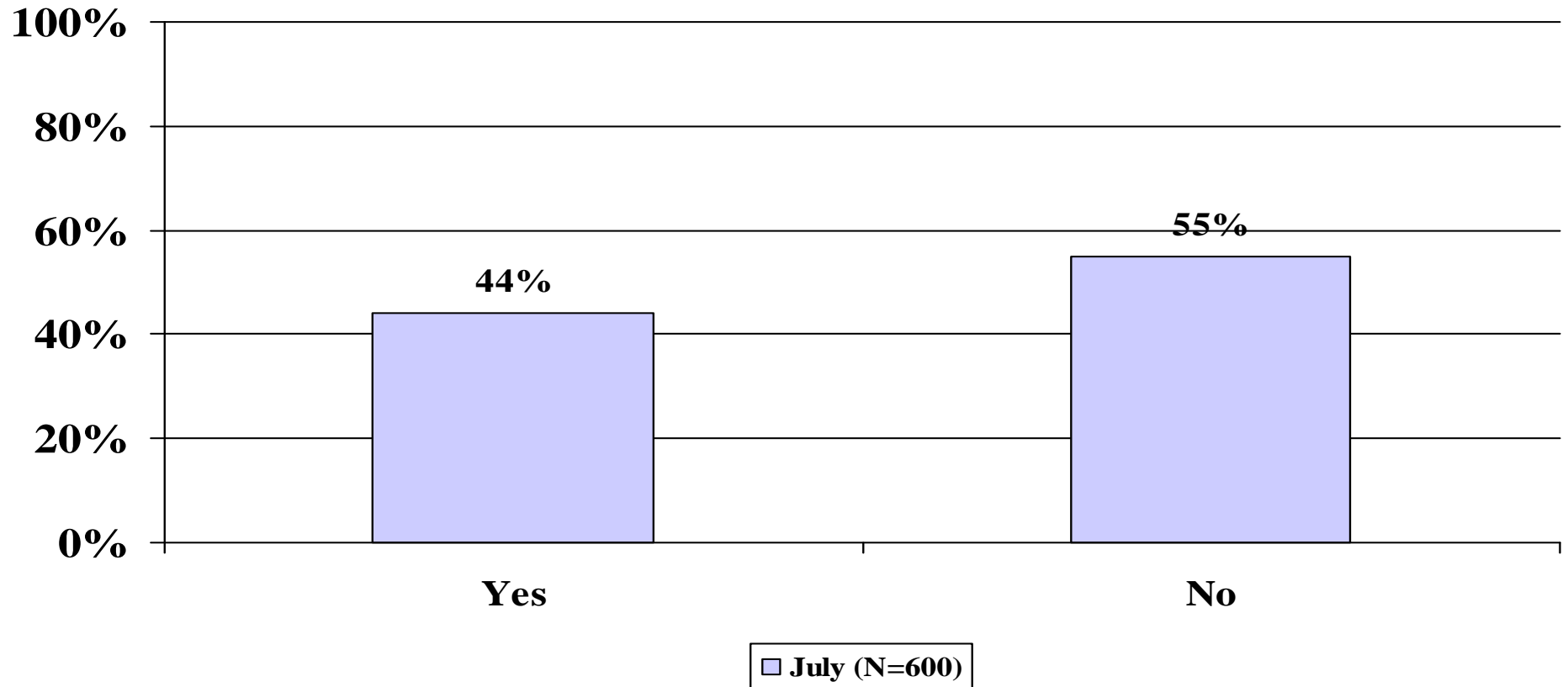
Q14b. In the past TWELVE MONTHS have you been STOPPED for speeding by the police?

Mean Number of Speeding Related Accidents in the Past 5 Years



Q14c. How many times have you been in a speeding related accident in the past five years?

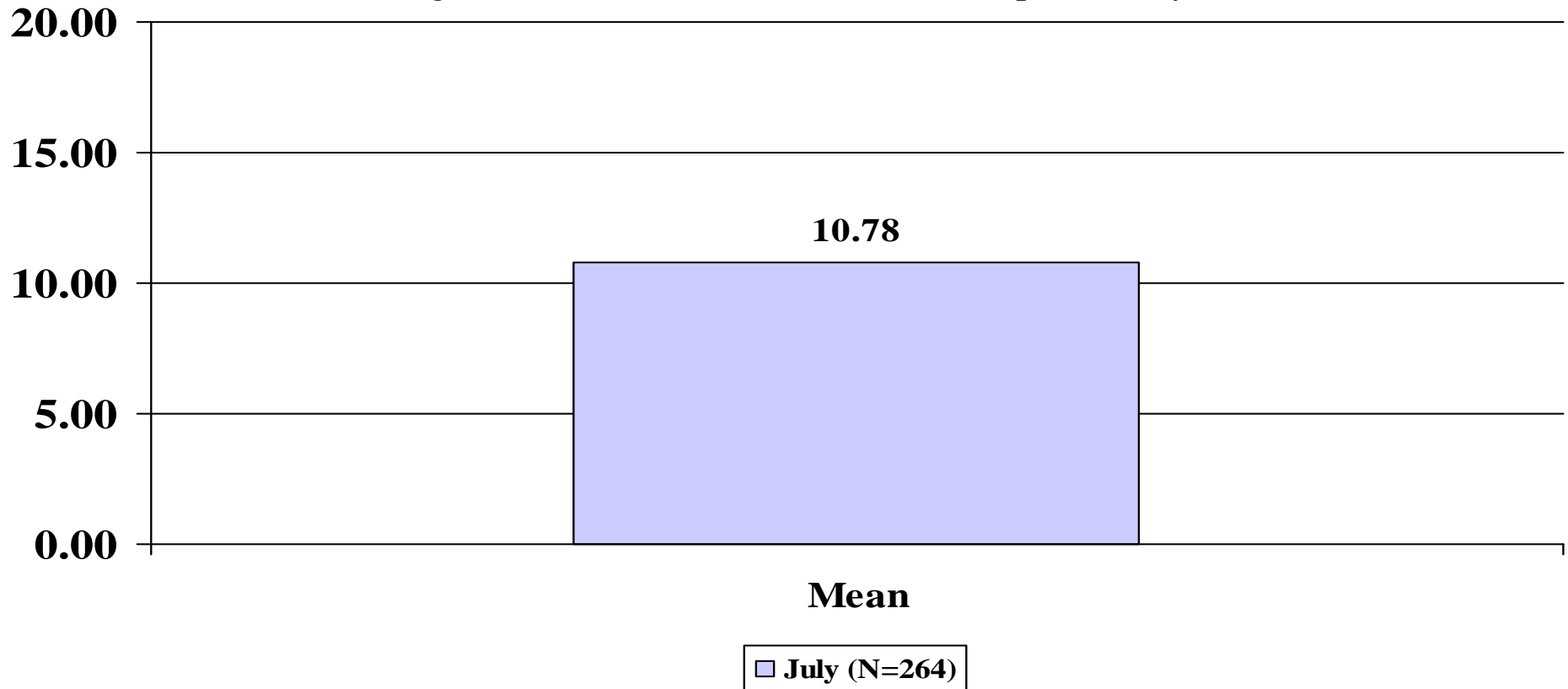
At Least One Alcoholic Beverage in the Past Year



Q15. In the past year have you had a least one drink of any alcoholic beverage, including liquor, beer, wine, or wine coolers?

Mean Number of Days in Past 60 Had Any Alcoholic Beverages

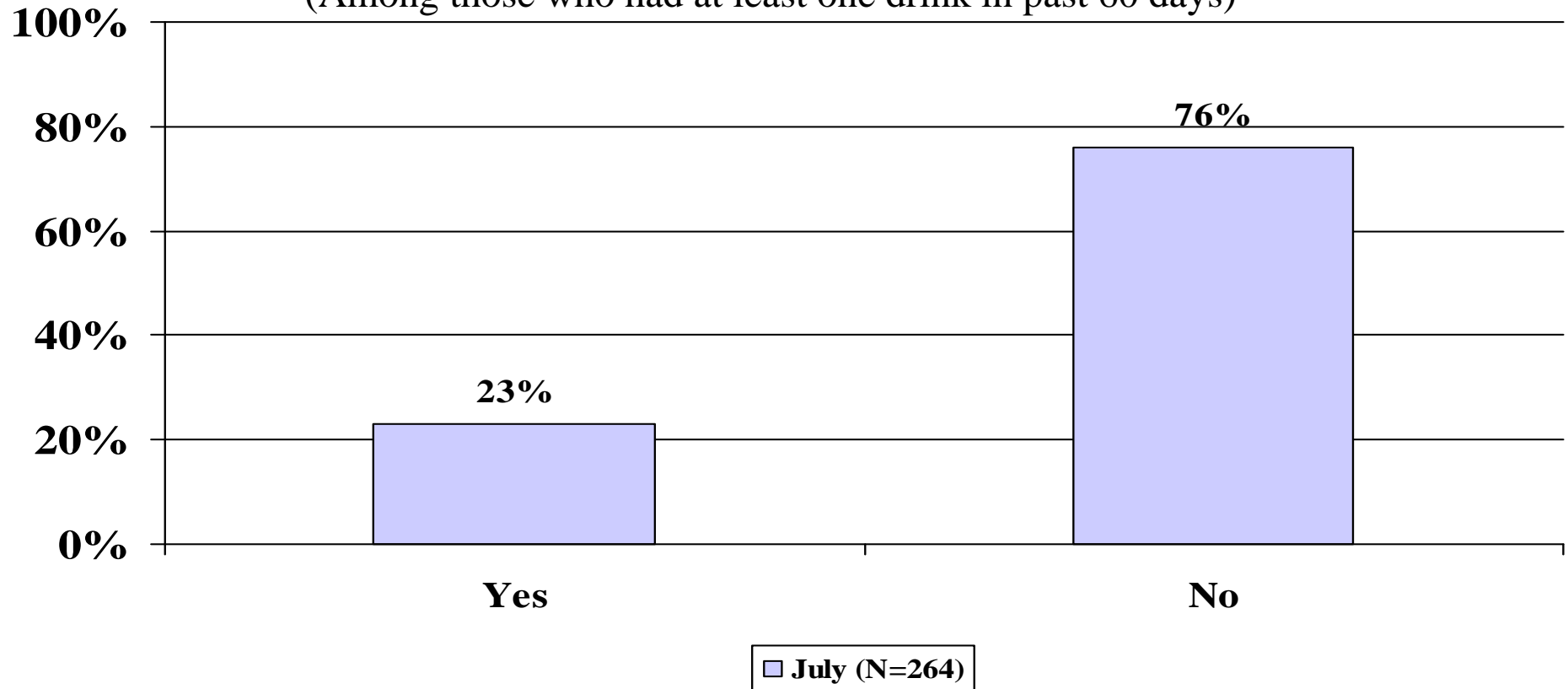
(Among those who have at least one drink in past 60 days)



Q16. How many days out of the past 60 days did you drink ANY alcoholic beverages (including beer, wine, wine coolers, mixed drinks or liquor)?

Driven Within Two Hours After Drinking in Past 60 Days

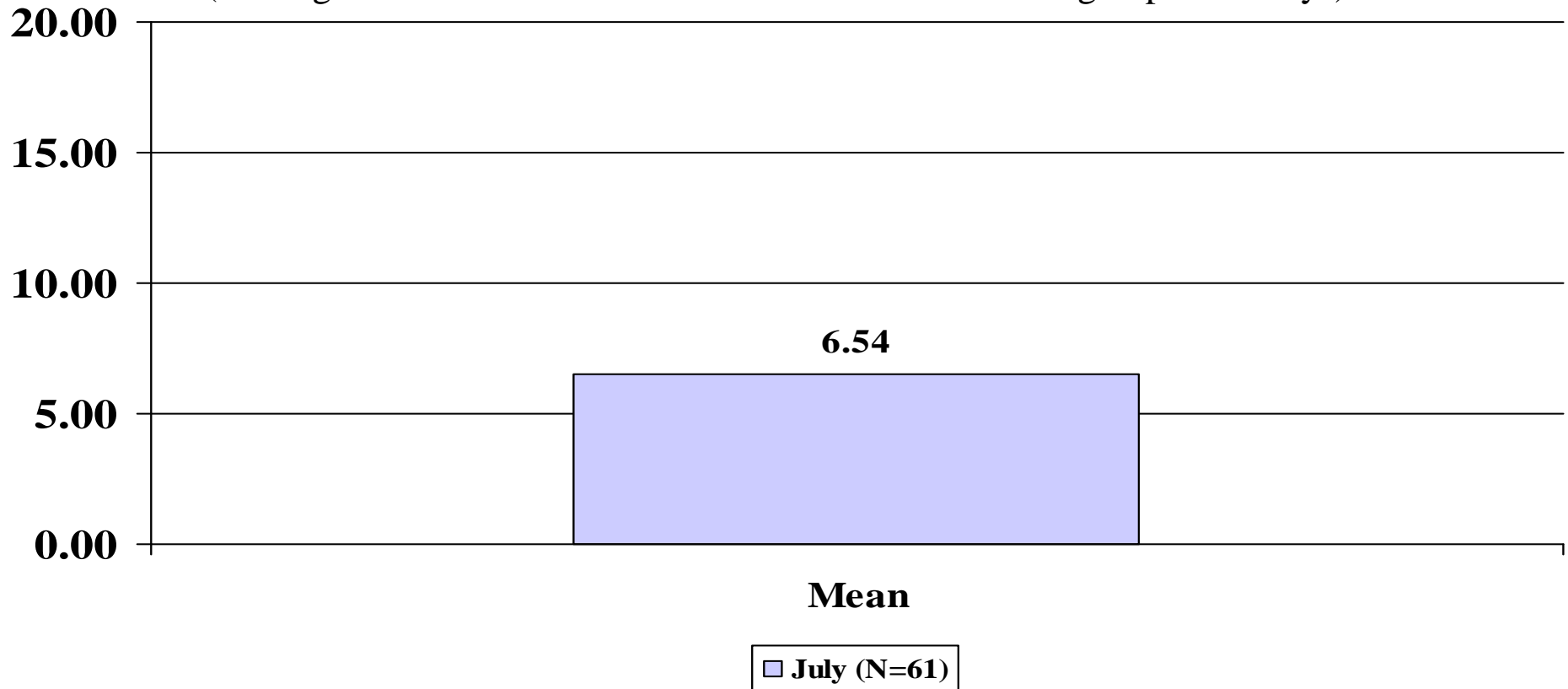
(Among those who had at least one drink in past 60 days)



Q17. During the past 60 days, have you driven a motor vehicle within two hours after drinking any alcoholic beverages, even if you had only a little?

Mean Number of Days in Past 60 Days Driven Within Two Hours of Drinking

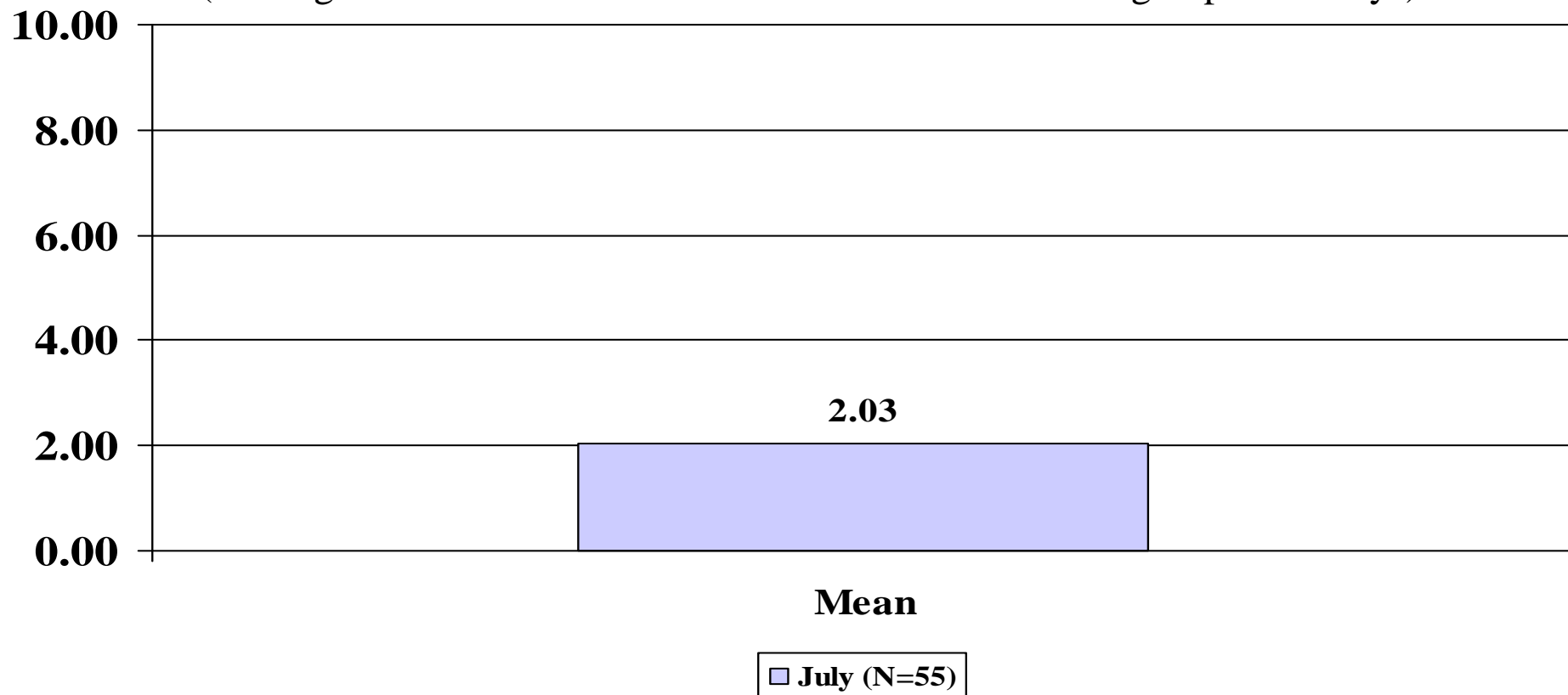
(Among those who have driven within 2 hours of drinking in past 60 days)



Q18. How many days out of the past 60 days did you drive within two hours after drinking any alcoholic beverages?

Mean Number of Drinks on Days Driven Within Two Hours of Drinking

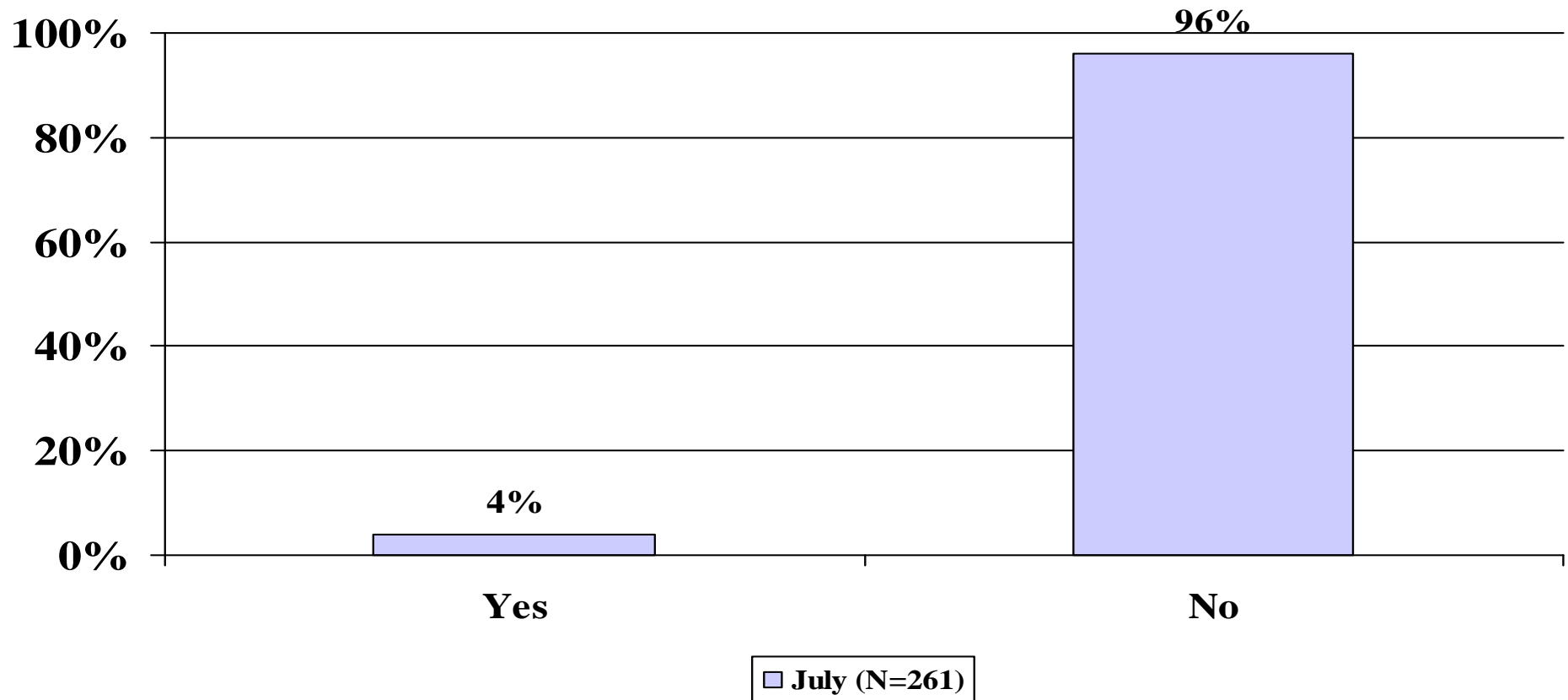
(Among those who have driven within 2 hours of drinking in past 60 days)



Q19. On the most recent occasion when you drove within two hours after drinking alcoholic beverages, how many drinks did you have?

Drove When Had Too Much to Drink in Past 60 Days

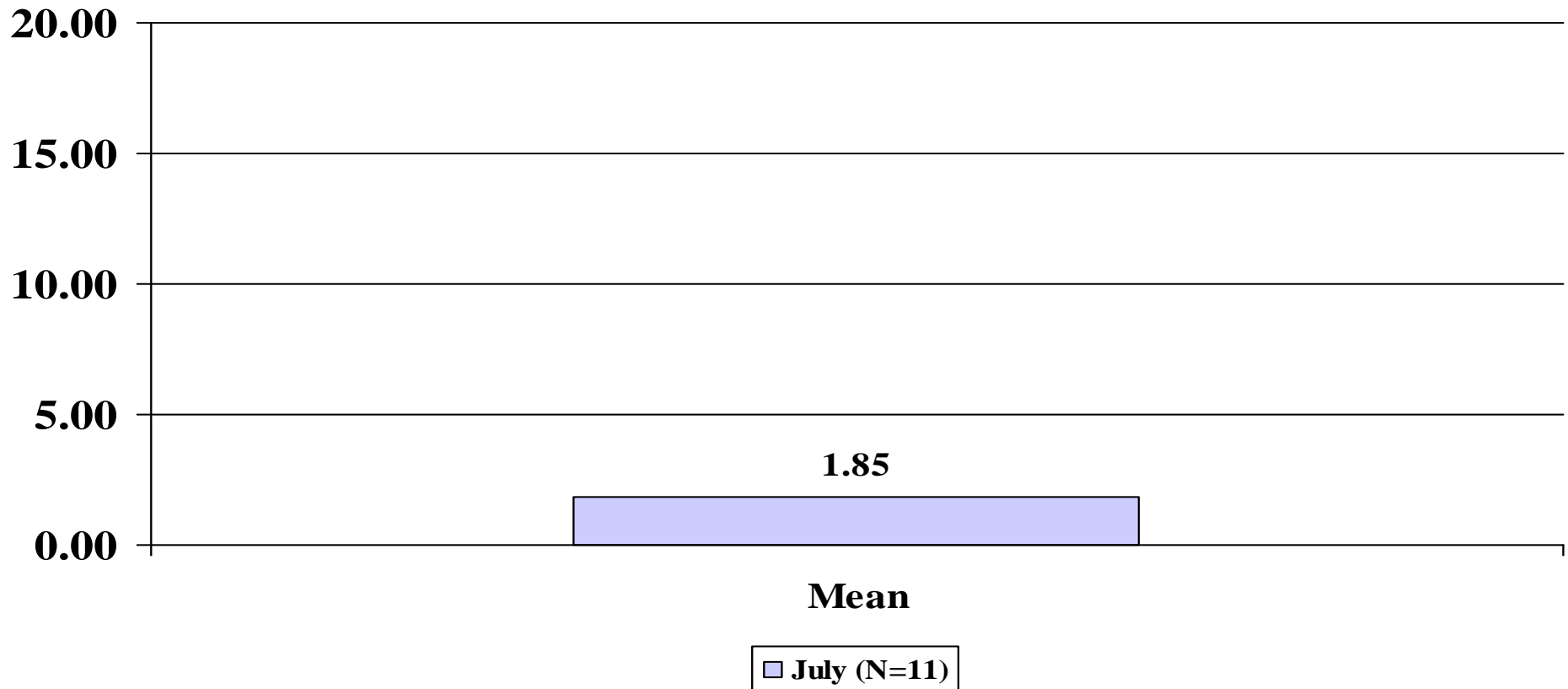
(Among those who have driven within 2 hours of drinking in past 60 days)



Q20. In the past 60 days, did you drive when you thought you had too much to drink?

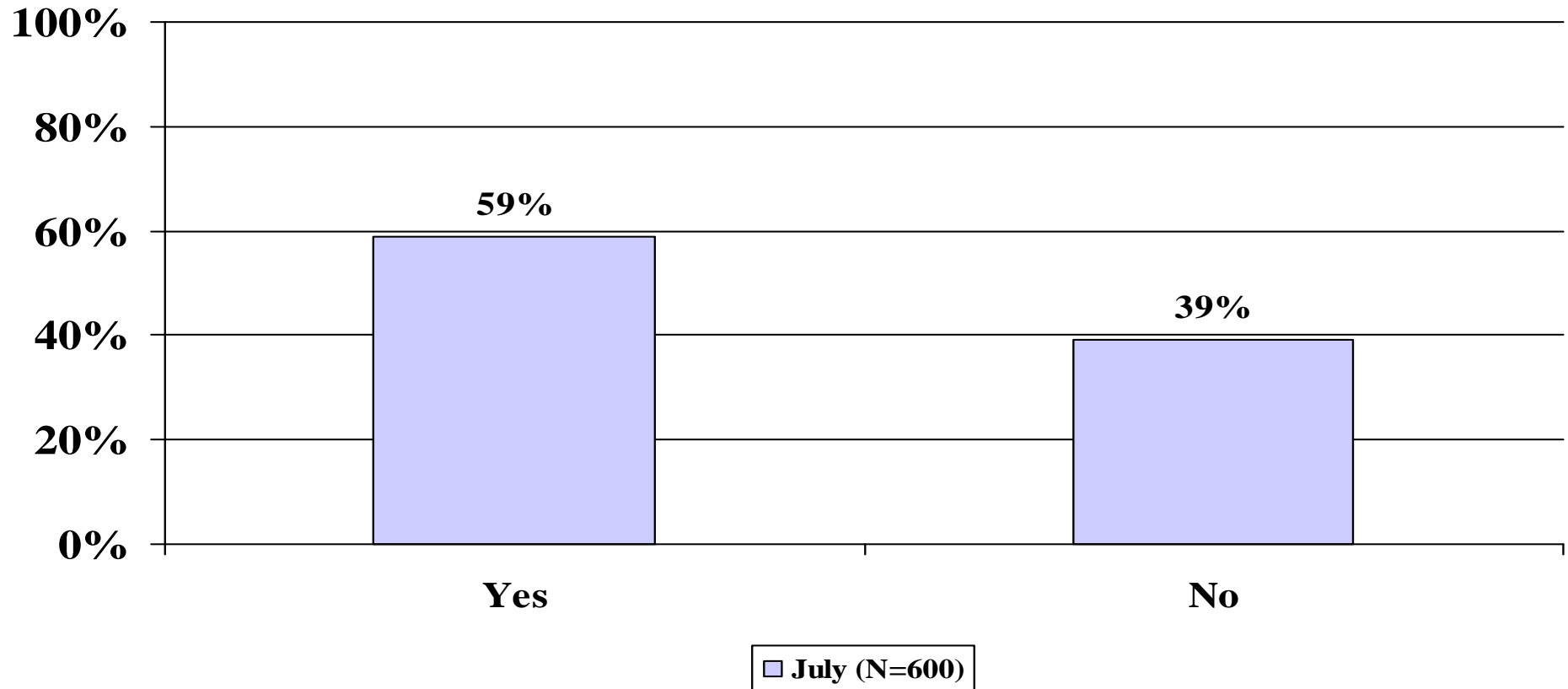
Mean Number of Times Drove When Had Too Much to Drink in Past 60 Days

(Among those who have driven within 2 hours of drinking in past 60 days)



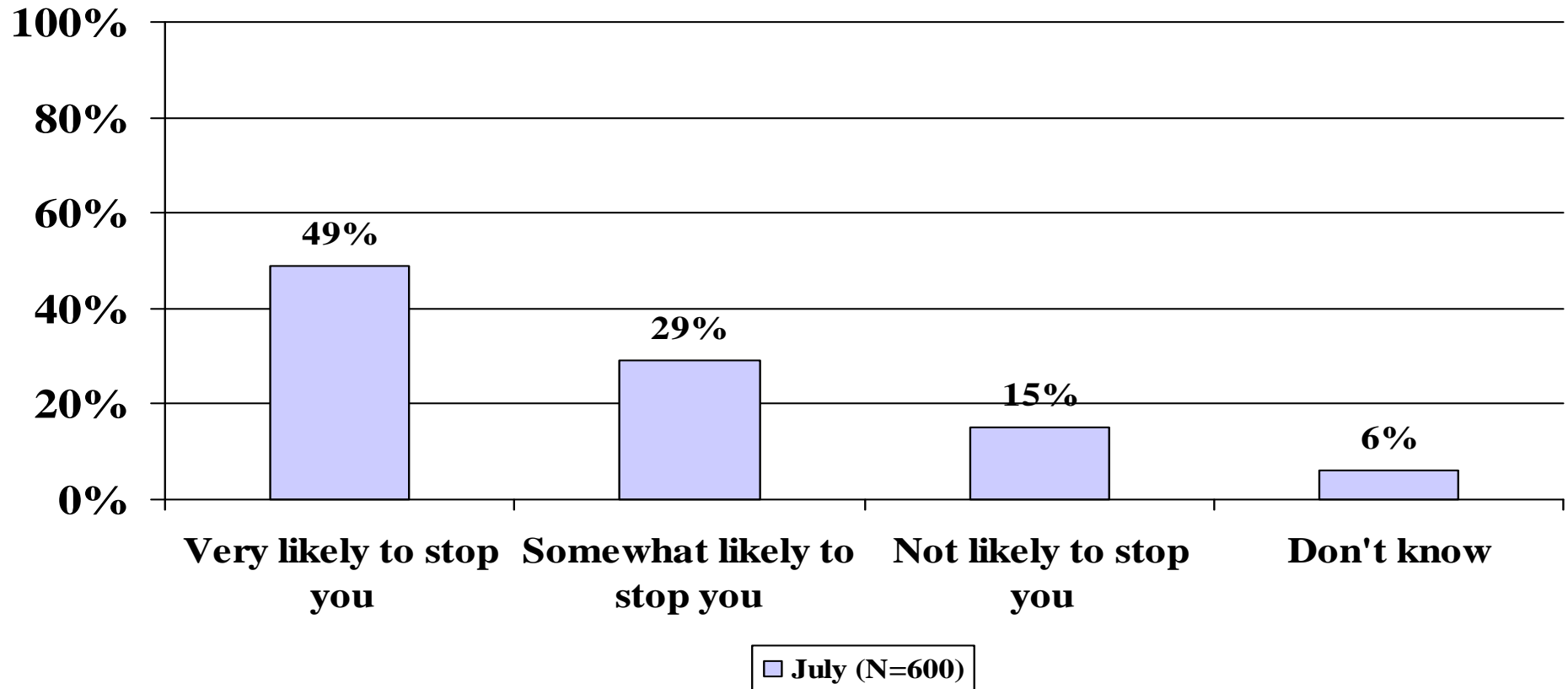
Q21. About how many times in the past 60 days did you drive when you thought you had too much to drink?

Read, Seen or Heard Anything About Drunk Driving Enforcement by the Police



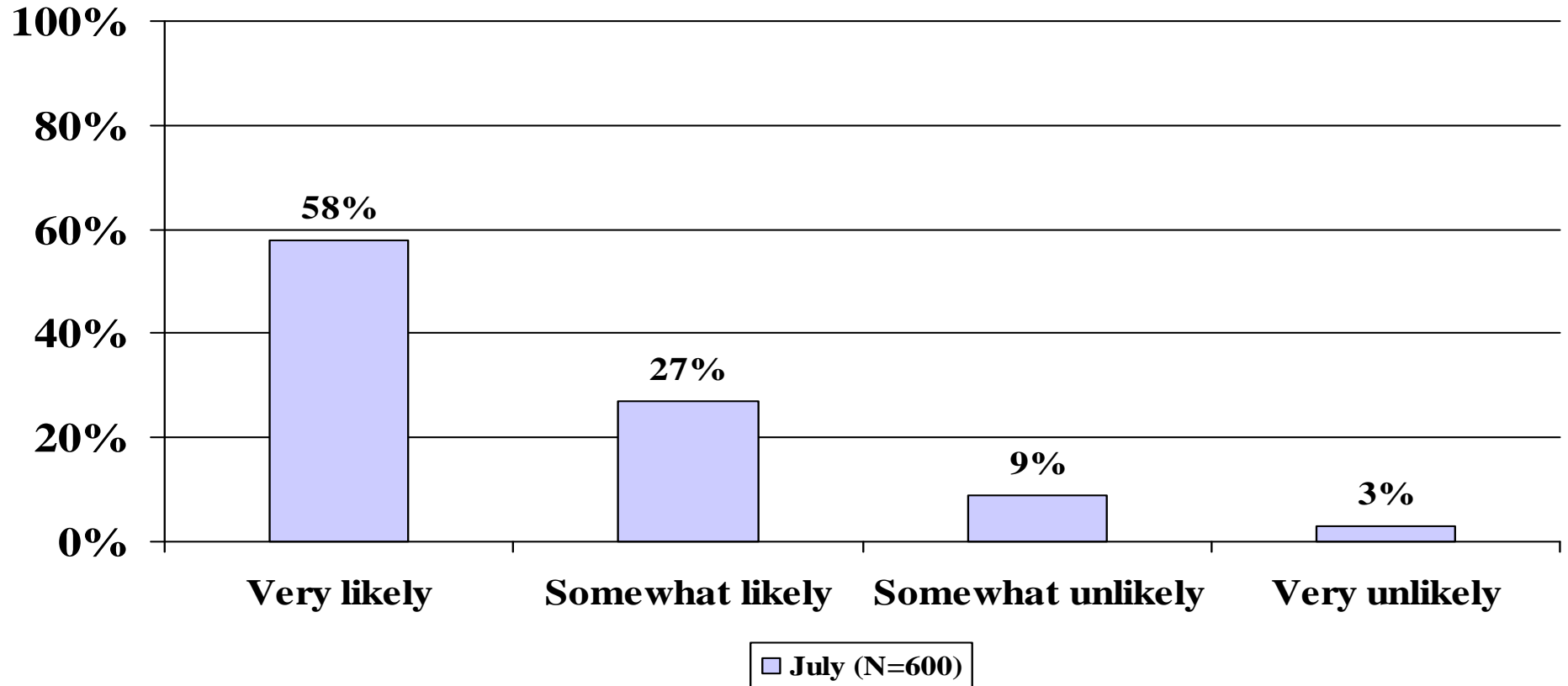
Q22. In the past 60 days, have you read, seen or heard anything about alcohol impaired driving (or drunk driving) enforcement by police?

Likelihood of Being Stopped by Police After Drinking



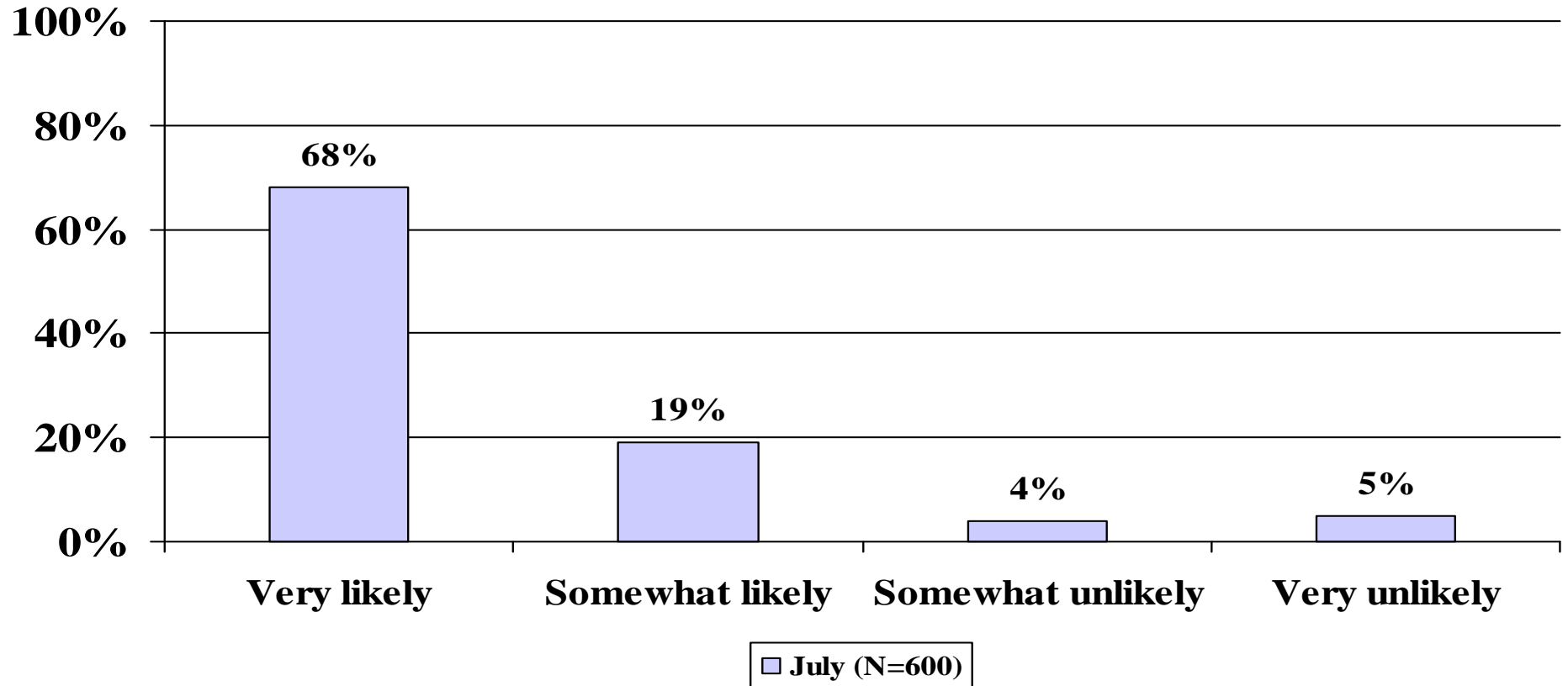
Q23. Suppose you drove a motor vehicle after drinking alcohol, and the amount of alcohol in your body was more than what the law allows for drivers. How likely is it that the police would stop you?

Likelihood of Getting Arrested If Drove After Drinking



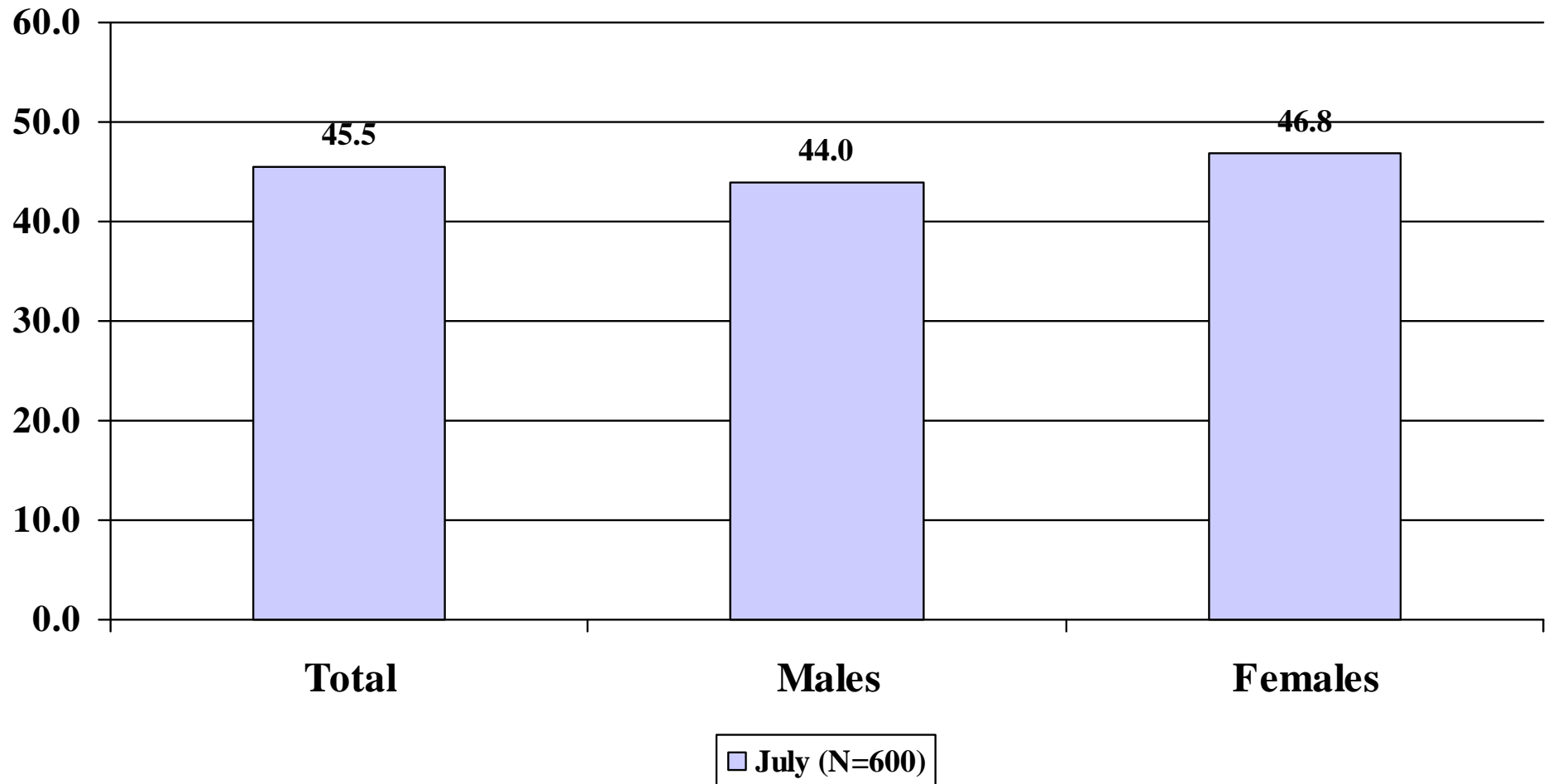
Q24. What do you think the chances are of someone getting arrested if they drive after drinking?

Likelihood of Being Convicted if Stopped by Police After Drinking and Charged with DUI



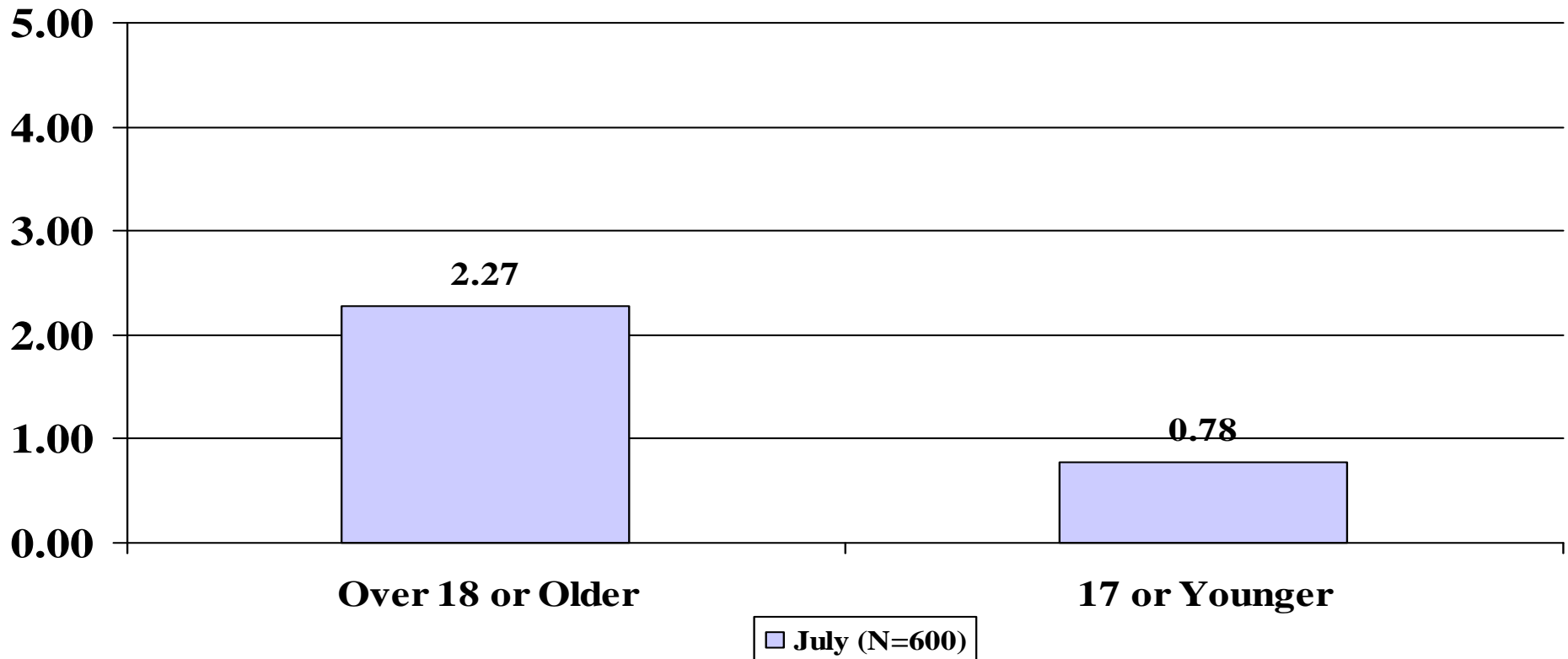
Q25. If you were driving after you had been drinking and were stopped and charged with DUI, how likely do you think you would be convicted? Would you say...

Respondent Age (Mean) by Gender



Q26. What is your age?

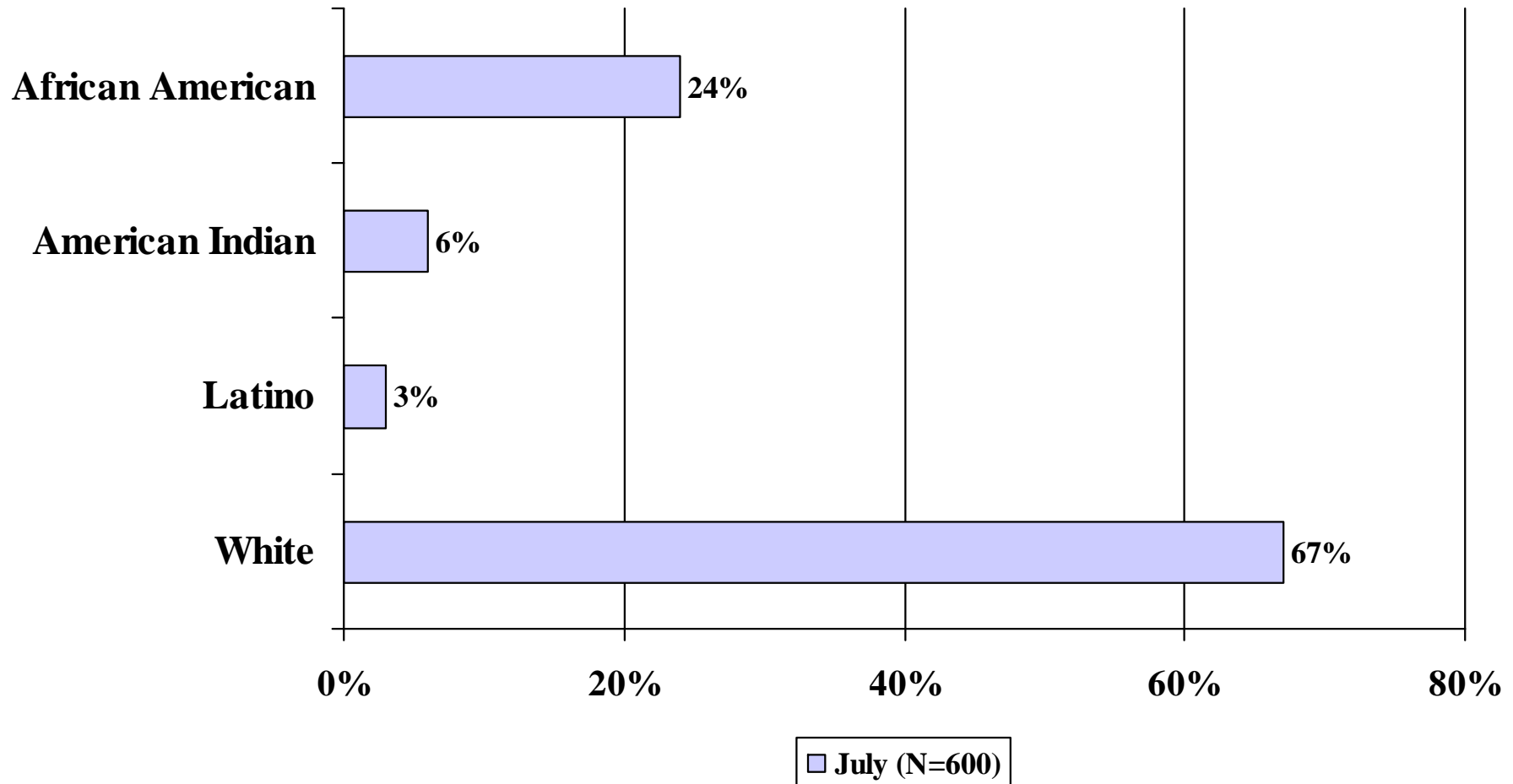
Mean Number of Persons (Over 18 or Older) in Household



Q27. Including yourself, how many persons, age 18 or older, are living in your household at least half of the time or consider it their primary residence?

Q28. How many children age 17 or younger are living in your household at least half of the time or consider it their primary residence?

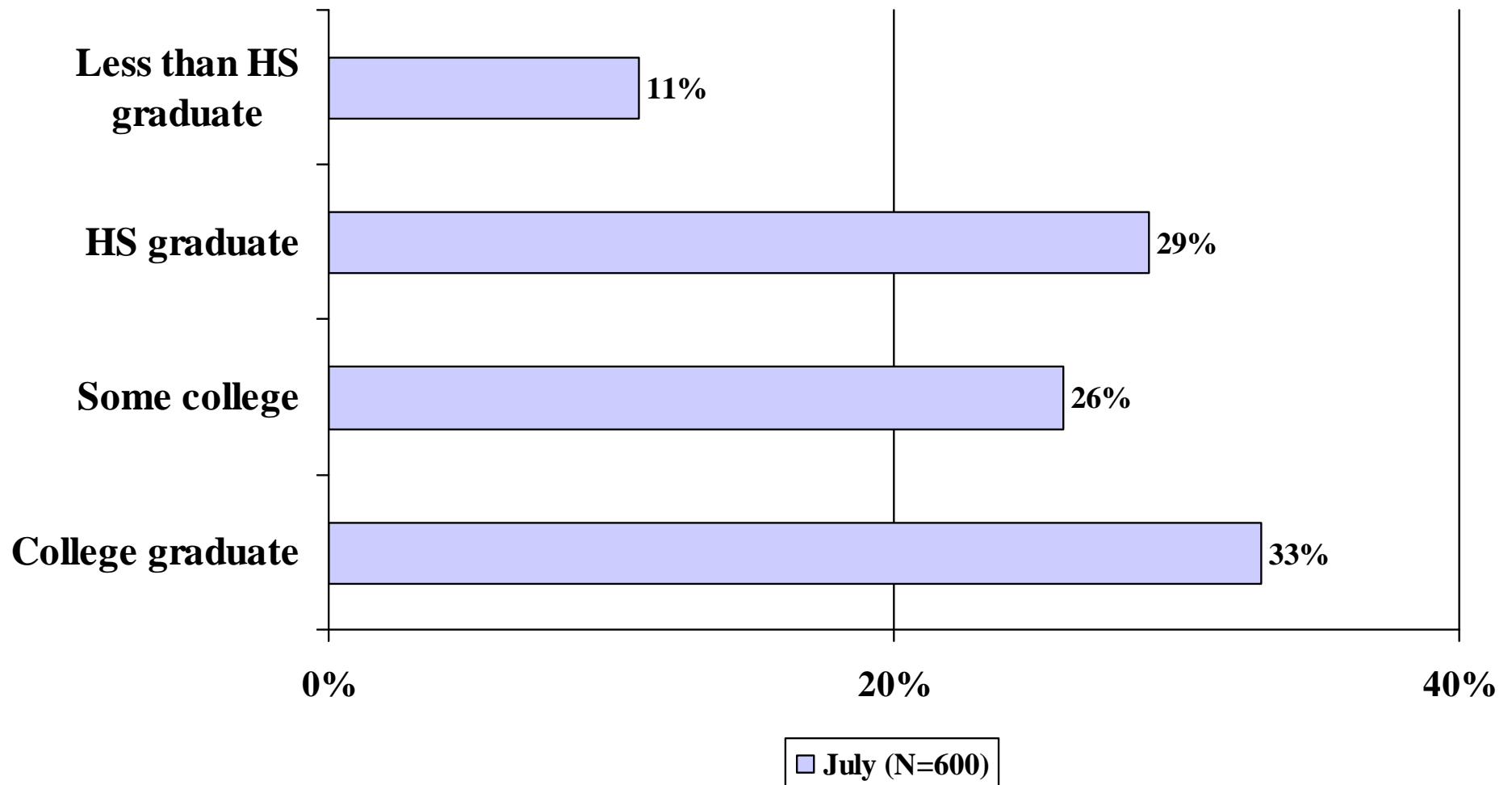
Respondent Race and Ethnicity



Q29. Do you consider yourself to be Hispanic or Latino?

Q30. Which of the following racial categories describes you?

Respondent Education



Q31. What is the highest grade or year of school you completed?